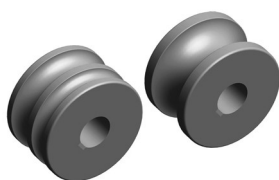


Accessories for Profile formers MC150B, MC200, MC200H and MC400

► Set of treated steel rollers

Set of 3 treated steel rollers for steel round pipe or stainless steel, thickness bigger than 2 mm.

For pipe					
in mm	Weight	ISO in mm	Weight	Whitwort inches	Weight
(30+25)	17,00 Kg	(26,9+21,3)	17,70 Kg	(1/2"+1"1/4") = (12,700 + 31,751 mm)	18,00 Kg
(35+20)	16,50 Kg	(33,7+17,2)	17,00 Kg	(1"+3/4") = (25,401 + 19,051 mm)	18,50 Kg
40	16,60 Kg	42,4	16,00 Kg	1"1/2 = 38,101 mm	17,25 Kg
50	14,25 Kg	48,3	14,40 Kg	2" = 50,802 mm	13,60 Kg
60	11,10 Kg	60,3	11,15 Kg	2"1/2 = 63,502 mm	9,75 Kg
70		76,1		3"=76,2 mm	



1" WHITWORT = 25,401mm

Weight: From 6 to 13 Kg

When pipe sizes are smaller, two sizes are included in the same roller.

Eg. (25+30) or (1/2"+1"1/4)

Susterin rollers do not spoil or contaminate the pipe.

For any other size or profile please ask the manufacturer.

► Set of Susterin rollers

Set of 3 Susterin rollers for stainless steel pipes, aluminium and delicate materials for thickness smaller than 2.5 mm.

For pipe in mm

(25+30) - (20+35) - 33 - 40 - 43 - 50 - 50,8 - 60



1" WHITWORT = 25,401mm Weight: 2,5 Kg

When pipe sizes are smaller, two sizes are included in the same roller.

Eg. (25+30) or (1/2"+1"1/4)

Susterin rollers do not spoil or contaminate the pipe.

For any other size or profile please ask the manufacturer.

Архангельск (8182)63-90-72
Астана (7172)727-132
Астрахань (8512)99-46-04
Барнаул (3852)73-04-60
Белгород (4722)40-23-64
Брянск (4832)59-03-52
Владивосток (423)249-28-31
Волгоград (844)278-03-48
Вологда (8172)26-41-59
Воронеж (473)204-51-73
Екатеринбург (343)384-55-89
Иваново (4932)77-34-06

Ижевск (3412)26-03-58
Иркутск (395)279-98-46
Казань (843)206-01-48
Калининград (4012)72-03-81
Калуга (4842)92-23-67
Кемерово (3842)65-04-62
Киров (8332)68-02-04
Краснодар (861)203-40-90
Красноярск (391)204-63-61
Курск (4712)77-13-04
Липецк (4742)52-20-81
Киргизия (996)312-96-26-47

Магнитогорск (3519)55-03-13
Москва (495)268-04-70
Мурманск (8152)59-64-93
Набережные Челны (8552)20-53-41
Нижний Новгород (831)429-08-12
Новокузнецк (3843)20-46-81
Новосибирск (383)227-86-73
Омск (3812)21-46-40
Орел (4862)44-53-42
Оренбург (3532)37-68-04
Пенза (8412)22-31-16
Казахстан (772)734-952-31

Пермь (342)205-81-47
Россия (495)268-04-70
Ростов-на-Дону (863)308-18-15
Рязань (4912)46-61-64
Самара (846)206-03-16
Санкт-Петербург (812)309-46-40
Саратов (845)249-38-78
Севастополь (8692)22-31-93
Симферополь (3652)67-13-56
Смоленск (4812)29-41-54
Сочи (862)225-72-31
Ставрополь (8652)20-65-13

Сургут (3462)77-98-35
Тверь (4822)63-31-35
Томск (3822)98-41-53
Тула (4872)74-02-29
Тюмень (3452)66-21-18
Ульяновск (8422)24-23-59
Уфа (347)229-48-12
Хабаровск (4212)92-98-04
Челябинск (351)202-03-61
Череповец (8202)49-02-64
Ярославль (4852)69-52-93

<https://nargesa.nt-rt.ru/> || [nrg@nt-rt.ru](mailto:ngr@nt-rt.ru)

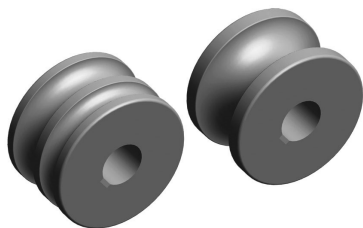
Accessories for Profile formers MC650

► Set of treated steel rollers

Set of 3 sets of treated steel rollers for steel round pipe or stainless steel, thickness bigger than 2 mm.

For pipe

in mm	Weight	ISO mm	Weight	Whitwort inches	Weight
(25+30)	45,30 Kg	(17,2+21,3)	49,50 Kg	$(1/2''+1''1/4'')$ = (12,700 + 31,751 mm)	47,25 Kg
(20+35)	44,80 Kg	(33,7+26,9)	43,75 Kg	$(1''+3/4'')$ = (25,401 + 19,051 mm)	48,00 Kg
40	45,30 Kg	42,4	44,40 Kg	$1''1/2$ = 38,101 mm	45,90 Kg
50	40,80 Kg	48,3	41,60 Kg	$2''$ = 50,802 mm	40,70 Kg
60	35,70 Kg	60,3	35,50 Kg	$2''1/2$ = 63,502 mm	33,70 Kg
70	64,70 Kg	76,1	60,20 Kg	$3''$ = 76,2 mm	60,20 Kg
80	57,40 Kg	88,9	50,35 Kg	$3'' 1/2$ = 88,9 mm	50,35 Kg
90	49,50 Kg	101,6	39,50 Kg	$4''$ = 101,6 mm	39,50 Kg
100	41,00 Kg				



1" WHITWORT = 25,401mm

When pipe sizes are smaller, two sizes are included in the same roller.

Eg. (25+30) or $(1/2''+1''1/4'')$

Susterin rollers do not spoil or contaminate the pipe.

For any other size or profile please ask the manufacturer.

► Set of Susterin rollers

Set of 3 Susterin rollers for stainless steel pipes, aluminium and delicate materials for thickness smaller than 2.5 mm.

For pipe

in mm	Weight	ISO mm	Weight	Whitwort inches	Weight
(25+30)	9,35 Kg	(17,2+21,3)	10,10 Kg	$(1/2''+1''1/4'')$ = (12,700 + 31,751 mm)	9,65 Kg
(20+35)	9,25 Kg	(33,7+26,9)	9,00 Kg	$(1''+3/4'')$ = (25,401 + 19,051 mm)	9,80 Kg
40	9,30 Kg	42,4	9,15 Kg	$1''1/2$ = 38,101 mm	9,40 Kg
50	8,50 Kg	48,3	8,65 Kg	$2''$ = 50,802 mm	8,45 Kg
60	7,60 Kg	60,3	7,55 Kg	$2''1/2$ = 63,502 mm	7,25 Kg
70	6,50 Kg				
80	11,80 Kg	76,1	12,30 Kg	$3''$ = 76,2 mm	12,30 Kg
90	10,35 Kg	88,9	10,50 Kg	$3'' 1/2$ = 88,9 mm	10,50 Kg
100	8,80 Kg	101,6	8,50 Kg	$4''$ = 101,6 mm	8,50 Kg



1" WHITWORT = 25,401mm

When pipe sizes are smaller, two sizes are included in the same roller.

Eg. (25+30) or $(1/2''+1''1/4'')$

Susterin rollers do not spoil or contaminate the pipe.

For any other size or profile please ask the manufacturer.

Accessories for Non-Mandrel Pipe Bender CC60

► Accessories for round pipes in millimeters · 15 to 60 mm



Rollers made of treated Steel. Units suitable for bending all types of round pipes 15 to 60 millimeters. The following is supplied with the unit: A main roller, a counter-shape, a clamp with a fastener
Check with the manufacturer for other dimensions

REF.	Diam. Ext.	Radius	Min. thickness	Max. thickness	Weight
Set diameter 15mm Radius 60					
140-17-01-10001	15mm	4D=60mm	1mm	5mm	3,18Kg
Set diameter 20mm Radius 60					
140-17-01-10002	20mm	3D=60mm	1mm	5mm	3,22Kg
Set diameter 25mm Radius 75					
140-17-01-10003	25mm	3D=75mm	1,2mm	5mm	5,55Kg
Set diameter 30mm Radius 90					
140-17-01-10004	30mm	3D=90mm	1,2mm	5mm	8,29Kg
Set diameter 35mm Radius 105					
140-17-01-10005	35mm	3D=105mm	1,5mm	5mm	12,14Kg
Set diameter 40mm Radius 120					
140-17-01-10006	40mm	3D=120mm	1,5mm	5mm	17,11Kg
Set diameter 50mm Radius 150					
140-17-01-10007	50mm	3D=150mm	2mm	5mm	31,41Kg
Set diameter 60mm Radius 180					
140-17-01-10008	60mm	3D=180mm	2mm	2,5mm	40,88Kg

► Accessories for 60mm round pipes



Rollers made of treated steel. Suitable kit to bend 60mm tube of 3mm wall thickness or thicker. The following is supplied with the unit: A main roller, a clamp with a fastener, a support holder
Check with the manufacturer for other dimensions
Supporting Roller Kit REF: 140-17-01-00002 is required

REF.	Diam. Ext.	Radius	Min. thickness	Max. thickness	Weight
Set diameter 60mm Radius 180 with support holder					
140-17-01-10009	60mm	3D=180mm	3mm	4mm	40,58Kg

► Supporting Roller Kit CC60



REF: 140-17-01-00002

The CC60 Supporting Roller Kit is used to bend 60mm tube of 3mm wall thickness or thicker.
Weight: 9,85Kg

Accessories for Non-Mandrel Pipe Bender CC60

► Accessories for round pipes 3/8" to 1" 1/2 Schedule



Rollers made of treated Steel. Units suitable for bending all types of round pipes 3/8" to 1" 1/2 Schedule.

The following is supplied with the unit: A main roller, a counter-shape, a clamp with a fastener
Check with the manufacturer for other dimensions

REF.	Diam. Ext.	Diam. Ext.	Radius	SCH10	SCH40	SCH80	SCH160	Weight
Set diameter 17,10mm Radius 60mm Diameter 3/8" Schedule								
140-17-01-20001	3/8"	17,1mm	60mm	1,65mm	2,31mm	3,20mm	—	4,22Kg
Set diameter 21,30mm Radius 63,9mm Diameter 1/2" Schedule								
140-17-01-20002	1/2"	21,3mm	3D=63,9 mm	2,11mm	2,77mm	3,73mm	4,78mm	3,56Kg
Set diameter 26,70mm Radius 80,1mm Diameter 3/4" Schedule								
140-17-01-20003	3/4"	26,7mm	3D=80,1mm	2,11mm	2,87mm	3,91mm	5,56mm	6,74Kg
Set diameter 33,70mm Radius 101,1mm Diameter 1" Schedule								
140-17-01-20004	1"	33,7mm	3D=101,1mm	2,77mm	3,38mm	4,55mm	6,35mm	11,18Kg
Set diameter 42,40mm Radius 127,2mm Diameter 1" 1/4 Schedule								
140-17-01-20005	1" 1/4	42,4mm	3D=127,2mm	2,77mm	3,56mm	4,85mm	6,35mm	18,86Kg
Set diameter 48,30mm Radius 144,9mm Diameter 1" 1/2 Schedule								
140-17-01-20006	1" 1/2	48,3mm	3D=144,9mm	2,77mm	3,68mm	5,08mm	—	27,05Kg

► Accessories for 2" Schedule round pipes



Rollers made of treated steel. Suitable kit to bend 2" tube of 2,77mm wall thickness or thicker.

The following is supplied with the unit: A main roller, a clamp with a fastener, a support holder
Check with the manufacturer for other dimensions

Supporting Roller Kit REF: 140-17-01-00002 is required

REF.	Diam. Ext.	Diam. Ext.	Radius	SCH10	SCH40	SCH80	SCH160	Weight
Set diameter 60,30mm Radius 180,9mm Diameter 2" Schedule								
140-17-01-20007	2"	60,30mm	3D=180,9mm	2,77mm	3,91mm	—	—	45,75Kg

► Supporting Roller Kit CC60



REF: 140-17-01-00002

The CC60 Supporting Roller Kit is used to bend 2" Schedule tube of 2,77mm wall thickness or thicker.

Weight: 9,85Kg

* All capacities are based on the norm of carbon steel tubes according to ASTM, Standard A-53 grade A with a maximum resistance strength of 330MPa. The walls with more thickness to the established one and the materials with more resistance, reduce the capacities of the machine. Check with your material supplier for the specifications of this one.

Accessories for Non-Mandrel Pipe Bender CC60

► Accessories for round pipes in inches · 1/2" to 2" 1/4 inches



Rollers made of treated Steel. Units suitable for bending all types of round pipes 1/2" to 2" 1/4 inches. The following is supplied with the unit: A main roller, a counter-shape, a clamp with a fastener
Check with the manufacturer for other dimensions

REF.	Diam. Ext.	Diam. Ext.	Radius	Min. thickness	Max. thickness	Weight
Set diameter 12,7mm Radius 60mm Diameter 1/2" inches						
140-17-01-30011	1/2"	12,7mm	60mm	1mm	4mm	3,37Kg
Set diameter 15,88mm Radius 60mm Diameter 5/8" inches						
140-17-01-30001	5/8"	15,88mm	60mm	1mm	4mm	3,61Kg
Set diameter 19,05mm Radius 60mm Diameter 3/4" inches						
140-17-01-30002	3/4"	19,05mm	60mm	1mm	4mm	2,79Kg
Set diameter 25,40mm Radius 76,20mm Diameter 1" inches						
140-17-01-30003	1"	25,4mm	3D=76,2mm	1,2mm	5mm	5,72Kg
Set diameter 31,75mm Radius 95,25mm Diameter 1" 1/4 inches						
140-17-01-30004	1" 1/4	31,75mm	3D=95,25mm	1,5mm	6mm	10,21Kg
Set diameter 38,10mm Radius 114,30mm Diameter 1" 1/2 inches						
140-17-01-30005	1" 1/2	38,10mm	3D=114,3mm	1,5mm	7mm	15,69Kg
Set diameter 44,45mm Radius 133,35mm Diameter 1" 3/4 inches						
140-17-01-30010	1" 3/4	44,45mm	3D=133,35mm	2mm	5mm	21,86Kg
Set diameter 50,8mm Radius 152,4mm Diameter 2" inches						
140-17-01-30006	2"	50,80mm	3D=152,4mm	2mm	5mm	32,24Kg
Set diameter 57,15mm Radius 171,45mm Diameter 2" 1/4 inches						
125-17-01-30007	2" 1/4	57,15mm	3D=171,45mm	2mm	2,5mm	36,13Kg

► Accessories for 2" 1/4 round pipes



Rollers made of treated Steel. Suitable kit to bend 2" 1/4 tube of 3mm wall thickness or thicker. The following is supplied with the unit: A main roller, a clamp with a fastener, a support holder
Check with the manufacturer for other dimensions
Supporting Roller Kit REF: 140-17-01-00002 is required

REF.	Diam. Ext.	Diam. Ext.	Radius	Min. thickness	Max. thickness	Weight
Set diameter 57,15mm Radius 171,45mm Diameter 2" 1/4 with support holder						
140-17-01-30008	2" 1/4	57,15mm	3D=171,45mm	3mm	4mm	35,91Kg

► Supporting Roller Kit CC60



REF: 140-17-01-00002

The CC60 Supporting Roller Kit is used to bend 2" 1/4 tube of 3mm wall thickness or thicker.

Weight: 9,85Kg PRICE: **390,00 €**

* The walls with more thickness to the established one and the materials with more resistance, reduce the capacities of the machine.

Accessories for Non-Mandrel Pipe Bender CC60

► Accessories for square pipes in millimeters · 20 to 40 mm



Rollers made of treated Steel. Units suitable for bending all types of square pipes 20 to 40mm. The following is supplied with the unit: A main roller, a counter-shape, a clamp with a fastener
Check with the manufacturer for other dimensions

REF.	Section	Radius	Min. thickness	Max. thickness	Weight
Square Tube Die Set 20mm Radius 100mm					
140-17-01-10101	20x20mm	5D=100mm	1,5mm	4mm	11,1Kg
Square Tube Die Set 25mm Radius 115mm					
140-17-01-10102	25x25mm	115mm	2mm	4mm	14,75Kg
Square Tube Die Set 30mm Radius 135mm					
140-17-01-10103	30x30mm	135mm	2mm	4mm	22Kg
Square Tube Die Set 40mm Radius 165mm					
140-17-01-10104	40x40mm	165mm	2mm	5mm	34,15Kg

► Accessories for square pipes in inches · 3/4" to 1" 1/2 inches



Rollers made of treated Steel. Units suitable for bending all types of square pipes 3/4" to 1" 1/2 inches. The following is supplied with the unit: A main roller, a counter-shape, a clamp with a fastener
Check with the manufacturer for other dimensions

REF.	Section	Section	Radius	Radius	Min. Thick.	Max. Thick.	Weight
Square Tube Die Set 3/4" (19,05mm) Radius 4" (101,6mm)							
140-17-01-30101	3/4"x3/4"	19,05x19,05mm	4"	101,6mm	1,5mm	4mm	11,5Kg
Square Tube Die Set 1" (25,4mm) Radius 4,5" (114,3mm)							
140-17-01-30102	1"x1"	25,4x25,4mm	4" 1/2	114,3mm	2mm	4mm	14,6Kg
Square Tube Die Set 1" 1/4 (31,75mm) Radius 5,5" (139,7mm)							
140-17-01-30103	1" 1/4x1"1/4	31,75x31,75mm	5" 1/2	139,7mm	2mm	4mm	23,3Kg
Square Tube Die Set 1" 1/2 (38,1mm) Radius 6,5" (165,1mm)							
140-17-01-30104	1" 1/2x1"1/2	38,1x38,1mm	6" 1/2	165,1mm	2mm	5mm	34,6Kg

Accessories for Non-Mandrel Pipe Bender CC60

► Nargesa BEND8 aerosol lubricant



The CC60 pipe bender comes with a 400 ml bottle of BEND8 lubricant. This is a high-additive and low-viscosity aerosol oil. Contains PTFE. Does not contain silicone.

- Enables the finish on the outer bend
- Inhibits roughness and inner marks
- Reduces wear of the tooling
- Especially designed for tubes of small thickness
- Lubricates to reduce friction
- Avoids and dissolves corrosion
- Gives shine and protects
- Cleans up and removes dirt

REF.	Description	Quantity	Weight
060-SPR-00003	400 ml bottle	400ml	0,390 Kg
060-SPR-00004	Box of 12 400 ml bottles	12x400ml	4,830 Kg

► CC60 2-axis positioning gauge



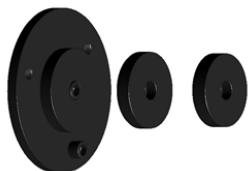
The gauge of the CC60 allows to make mass produced parts, much faster, more accurate and repetitively.

- Adjustable longitudinal positioning with 6 positions
- Angular head rotation every 5 degrees
- Four-clamp plate adjustable to round and square tube
- Longitudinal movement with high precision linear guides
- Automatic anti-collision control
- Easy handling and preparation for difficult parts

REF.	Gauge length	Maximum capacity	Weight
140-17-01-50000	3000mm	60,3mm, 2" Schedule	125Kg

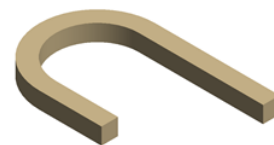
Accessories for MT150A

► Flat bent rings



Reference: 140-01-01-00001

Steel Die to make round or square bent, the so called English railing.



Inner diameter	Max. Capacity	Weight
96, 100, 110 mm	Round or square 16 mm	10 Kg

► Belly top railing die



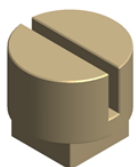
Reference: 140-01-01-00002

Steel Die to make the Belly Top Railing , used in balconies and windows.



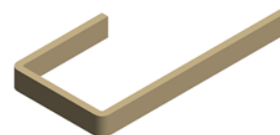
Inner diameter	Max. Capacity	Weight
225 mm	Round or square 16 mm	12 Kg

► Flat bar bent die



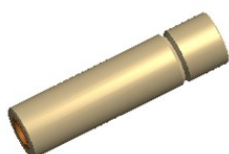
Reference: 140-01-01-00003

Treated Steel die for making flat bar folding operations, handrails or clods in all kinds. Folding with minimum external radius.



Max. Capacity	Weight
40x10 mm flat bar	3,1 Kg

► Edge scrolls



Reference: 140-01-01-00004

Treated steel Die to make scrolls or edge spirals in order to give it a different styling touch, it's commonly used in some specific countries.



Max. capacity	Weight
Round or square 16 mm	0,75 Kg

Accessories for MT150A

► Baskets tooling



Reference: 140-01-01-00005

Tooling to make all kinds of baskets, in different sizes for square or round bars.

Available tooling for millimeter and inch square sizes



Max. Capacity.	Weight
4 square or round 10 mm	45 Kg

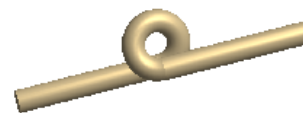
Accessories for MT500A

► Double eyed tooling



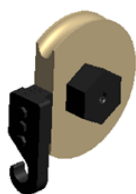
Reference: 140-01-03-00001

Tooling to make the folding commonly called "pig's tail" it's very used in balconies, handrails and many ornamental utilities.



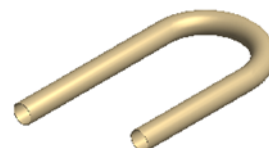
Max. Capacity	Weight
16 mm round	35 Kg

► Bent pipe die up to 180°



Reference: 140-01-03-00002

Steel die to make curves in pipes with fixed and adjustable radius to different degrees.



Pipe max. diameter	Pipe min. thickness	Piece radius	Degrees	Weight
40 mm	3 mm	3 x pipe diam.	Max.180 degrees	15/35 Kg

► Belly top railing



Reference: 140-01-03-00003

Steel die to make Belly top railing commonly used in balconies and windows.



Inner diameter	Max. Capacity	Weight
225 mm	Round or square 16 mm	12 Kg

► Oval scrolls die



Reference: 140-01-03-00004

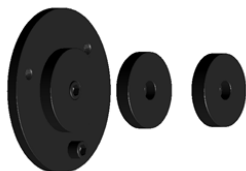
Steel die to make oval scrolls for all kind of railings.



Outer diameter	Max. Capacity	Weight
240x190 mm	Round or square de 16 mm	11 Kg

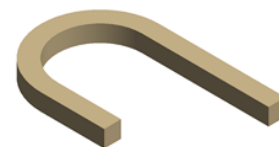
Accessories for MT500A

► Flat bent rings



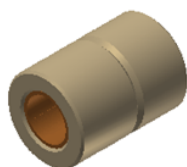
Reference: 140-01-03-00005

Steel die to mke folding operations in round or square bars such as the so called English railings.



Inner diameter	Max. Capacity	Weight
96, 100, 110 mm	Round or square 16 mm	10 Kg

► Edge scrolls die



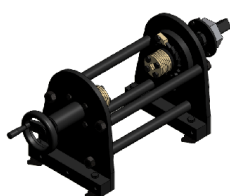
Reference: 140-01-03-00006

Treated Steel bar to make scrolls or edge spirals in order to give it a different styling touch, it is very used in specific countries.



Max. Capacity	Weight
Round or square 25 mm	0,400 Kg

► Baskets tooling



Reference: 140-01-03-00012

Tooling to make all kinds of baskets, different sizes in square or round bars.

Available tooling for millimeter and inch square sizes



Max. Capacity	Weight
4 square or round de 12 mm	55 Kg

Accessories for End Forging Machine NF70

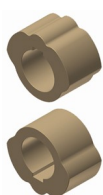
► Set of special rollers



Reference: 140-12-02-00001

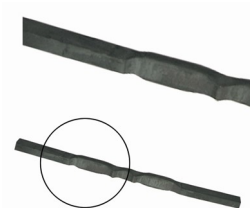
We design and manufacture all kind of special rollers under request.

► Set of trilobular rollers



Reference: 140-12-02-00003

Set of trilobular rollers to emboss decoration in the middle of a baluster.



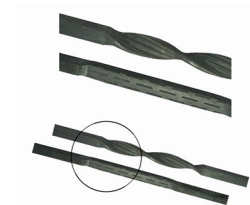
Units per set	Maximum capacity	Maximum capacity	Weight
2	Round and square 20mm	Rectangular 50x10mm	4,2 Kg

► Set of triple middle marking rollers



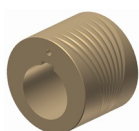
Reference: 140-12-02-00004

Set of excentric rollers to emboss the middle of balusters. Triple design, flat, striped and discontinuous in the same roller.



Units per set	Maximum capacity	Maximum capacity	Weight
2	Round and square 20mm	Rectangular 50x10mm	8,5 Kg

► Set of fishtail roller



Reference: 140-12-02-00005

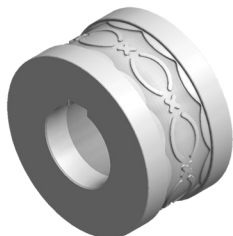
Two-grooved roller, one for big diameters and the other one for smaller diameters.



Units per set	Maximum capacity	Maximum capacity	Weight
1	Round and square 20mm	Rectangular 50x10mm	7,7 Kg

Accessories for Iron embossing machine NOA60

► Embossing roller 01

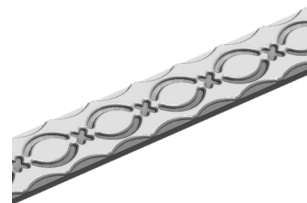


Reference: 140-11-01-00001.40

Roller to emboss a 40 mm or 1"-1/2 inches handrail

Guide 140-11-01-00401 or 140-11-01-00402 is required

Ask the manufacturer about different dimensions



Units per machine	Material thickness	Weight
1	From 6 to 10mm	6,5 Kg

► Embossing roller 02

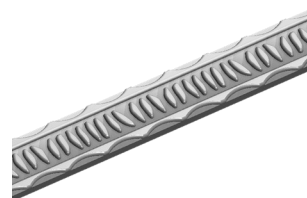


Reference: 140-11-01-00002.40

Roller to emboss a 40 mm or 1"-1/2 inches handrail

Guide 140-11-01-00401 or 140-11-01-00402 is required

Ask the manufacturer about different dimensions



Units per machine	Material thickness	Weight
1	From 6 to 10mm	6,5 Kg

► Embossing roller 03

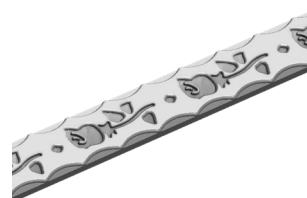


Reference: 140-11-01-00003.40

Roller to emboss a 40 mm or 1"-1/2 inches handrail

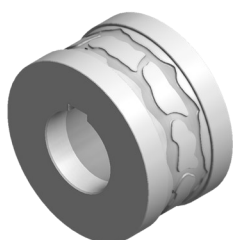
Guide 140-11-01-00401 or 140-11-01-00402 is required

Ask the manufacturer about different dimensions



Units per machine	Material thickness	Weight
1	From 6 to 10mm	6,5 Kg

► Embossing roller 04

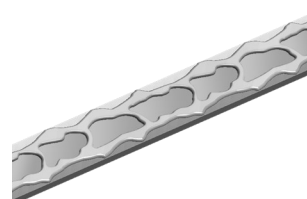


Reference: 140-11-01-00004.40

Roller to emboss a 40 mm or 1"-1/2 inches handrail

Guide 140-11-01-00401 or 140-11-01-00402 is required

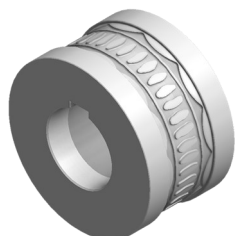
Ask the manufacturer about different dimensions



Units per machine	Material thickness	Weight
1	From 6 to 10mm	6,5 Kg

Accessories for Iron embossing machine NOA60

► Embossing roller 05

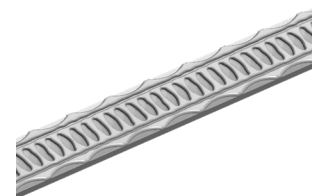


Reference: 140-11-01-00005.40

Roller to emboss a 40 mm or 1"-1/2 inches handrail

Guide 140-11-01-00401 or 140-11-01-00402 is required

Ask the manufacturer about different dimensions



Units per machine	Material thickness	Weight
1	From 6 to 10mm	6,5 Kg

► Embossing roller 06



Reference: 140-11-01-00006.40

Roller to emboss a 40 mm or 1"-1/2 inches handrail

Guide 140-11-01-00401 or 140-11-01-00402 is required

Ask the manufacturer about different dimensions



Units per machine	Material thickness	Weight
1	From 6 to 10mm	6,5 Kg

► Embossing roller 07



Reference: 140-11-01-00007.40

Roller to emboss a 40 mm or 1"-1/2 inches handrail

Guide 140-11-01-00401 or 140-11-01-00402 is required

Ask the manufacturer about different dimensions



Units per machine	Material thickness	Weight
1	From 6 to 10mm	6,5 Kg

► Embossing roller 08



Reference: 140-11-01-00008.40

Roller to emboss a 40 mm or 1"-1/2 inches handrail

Guide 140-11-01-00401 or 140-11-01-00402 is required

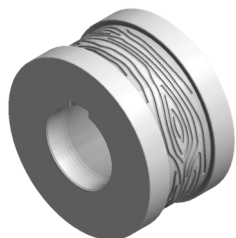
Ask the manufacturer about different dimensions



Units per machine	Material thickness	Weight
1	From 6 to 10mm	6,5 Kg

Accessories for Iron embossing machine NOA60

► Embossing roller 09

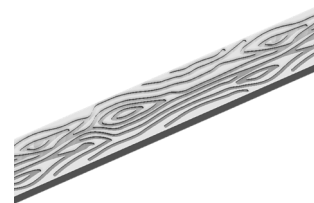


Reference: 140-11-01-00009

Roller to emboss handrail up to 60 mm

Guide 140-11-01-00401, 140-11-01-00402 or 140-11-01-00400 is required

Ask the manufacturer about different dimensions



Units per machine	Material thickness	Weight
1	From 6 to 10mm	6,1 Kg

► Embossing roller 10



Reference: 140-11-01-00010.40

Roller to emboss a 40 mm or 1"-1/2 inches handrail

Guide 140-11-01-00401 or 140-11-01-00402 is required

Ask the manufacturer about different dimensions



Units per machine	Material thickness	Weight
1	From 6 to 10mm	6,5 Kg

► Embossing roller 11



Reference: 140-11-01-00011.40

Roller to emboss a 40 mm or 1"-1/2 inches handrail

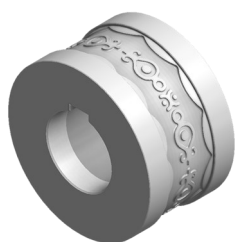
Guide 140-11-01-00401 or 140-11-01-00402 is required

Ask the manufacturer about different dimensions



Units per machine	Material thickness	Weight
1	From 6 to 10mm	6,5 Kg

► Embossing roller 12



Reference: 140-11-01-00012.40

Roller to emboss a 40 mm or 1"-1/2 inches handrail

Guide 140-11-01-00401 or 140-11-01-00402 is required

Ask the manufacturer about different dimensions



Units per machine	Material thickness	Weight
1	From 6 to 10mm	6,5 Kg

Accessories for Iron embossing machine NOA60

► Embossing roller 13

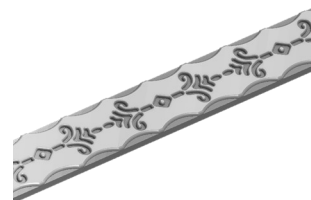


Reference: 140-11-01-00013.40

Roller to emboss a 40 mm or 1"-1/2 inches handrail

Guide 140-11-01-00401 or 140-11-01-00402 is required

Ask the manufacturer about different dimensions



Units per machine	Material thickness	Weight
1	From 6 to 10mm	6,5 Kg

► Embossing roller 14

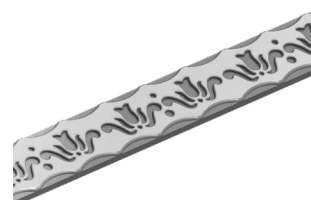


Reference: 140-11-01-00014.40

Roller to emboss a 40 mm or 1"-1/2 inches handrail

Guide 140-11-01-00401 or 140-11-01-00402 is required

Ask the manufacturer about different dimensions



Units per machine	Material thickness	Weight
1	From 6 to 10mm	6,5 Kg

► Embossing roller 15

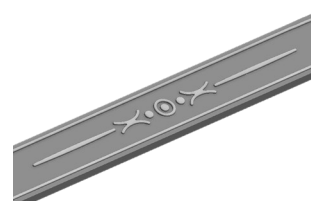


Reference: 140-11-01-00015.40

Roller to emboss a 40 mm or 1"-1/2 inches handrail

Guide 140-11-01-00401 or 140-11-01-00402 is required

Ask the manufacturer about different dimensions



Units per machine	Material thickness	Weight
1	From 6 to 10mm	6,4 Kg

► Embossing roller 16



Reference: 140-11-01-00016.40

Roller to emboss a 40 mm or 1"-1/2 inches handrail

Guide 140-11-01-00401 or 140-11-01-00402 is required

Ask the manufacturer about different dimensions



Units per machine	Material thickness	Weight
1	From 6 to 10mm	6,4 Kg

Accessories for Iron embossing machine NOA60

► Embossing roller 17



Reference: 140-11-01-00017.40

Roller to emboss a 40 mm or 1"-1/2 inches handrail

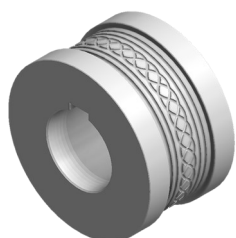
Guide 140-11-01-00401 or 140-11-01-00402 is required

Ask the manufacturer about different dimensions



Units per machine	Material thickness	Weight
1	From 6 to 10mm	6,4 Kg

► Embossing roller 18

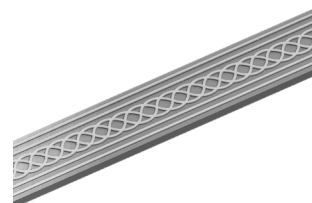


Reference: 140-11-01-00018.40

Roller to emboss a 40 mm or 1"-1/2 inches handrail

Guide 140-11-01-00401 or 140-11-01-00402 is required

Ask the manufacturer about different dimensions



Units per machine	Material thickness	Weight
1	From 6 to 10mm	6,4 Kg

► Embossing roller 19



Reference: 140-11-01-00019.40

Roller to emboss a 40 mm or 1"-1/2 inches handrail

Guide 140-11-01-00401 or 140-11-01-00402 is required

Ask the manufacturer about different dimensions



Units per machine	Material thickness	Weight
1	From 6 to 10mm	6,4 Kg

► Embossing roller 20

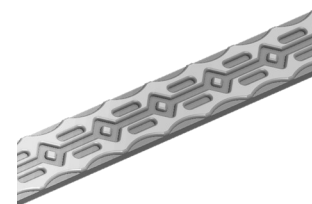


Reference: 140-11-01-00020.40

Roller to emboss a 40 mm or 1"-1/2 inches handrail

Guide 140-11-01-00401 or 140-11-01-00402 is required

Ask the manufacturer about different dimensions



Units per machine	Material thickness	Weight
1	From 6 to 10mm	6,5 Kg

Accessories for Iron embossing machine NOA60

► Embossing roller 21

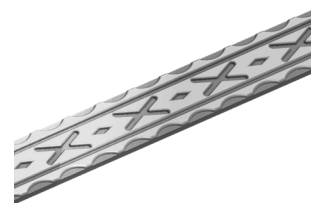


Reference: 140-11-01-00021.50

Roller to emboss a 50 mm or 2" inches handrail

Guide 140-11-01-00401 or 140-11-01-00402 is required

Ask the manufacturer about different dimensions



Units per machine	Material thickness	Weight
1	From 6 to 10mm	6,4 Kg

► Embossing roller 22



Reference: 140-11-01-00022.40

Roller to emboss a 40 mm or 1"-1/2 inches handrail

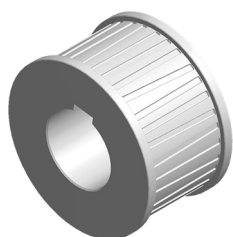
Guide 140-11-01-00401 or 140-11-01-00402 is required

Ask the manufacturer about different dimensions



Units per machine	Material thickness	Weight
1	From 6 to 10mm	6,4 Kg

► Embossing roller 23

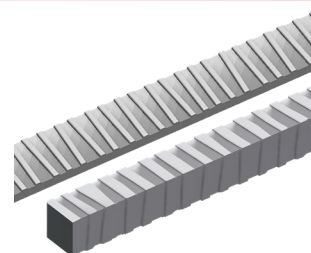


Reference: 140-11-01-00023

Roller to emboss handrail up to 60 mm

Guide 140-11-01-00401, 140-11-01-00402, 140-11-01-00400 or 140-11-01-00300 is required

Ask the manufacturer about different dimensions



Units per machine	Material thickness	Weight
1	From 6 to 10mm	6 Kg

► Embossing roller 24



Reference: 140-11-01-00024.40

Roller to emboss a 40 mm or 1"-1/2 inches handrail

Guide 140-11-01-00401 or 140-11-01-00402 is required

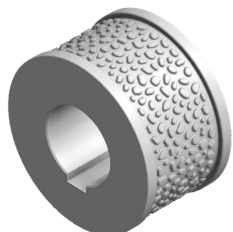
Ask the manufacturer about different dimensions



Units per machine	Material thickness	Weight
1	From 6 to 10mm	6,4 Kg

Accessories for Iron embossing machine NOA60

► Embossing roller 25

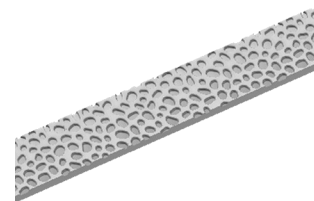


Reference: 140-11-01-00025

Roller to emboss handrail up to 60 mm

Guide 140-11-01-00401, 140-11-01-00402 or 140-11-01-00400 is required

Ask the manufacturer about different dimensions



Units per machine	Material thickness	Weight
1	From 6 to 10mm	6,3 Kg

► Roller for the side marking of flat bar

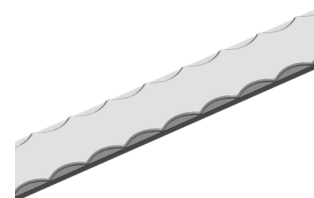


Reference: 140-11-01-00028

Sectioned roller to emboss different flat bar sizes on the same kit. Adjustable to flat bars of 25mm o 1", 30mm o 1" 1/4, 40mm o 1" 1/2 and 50mm o 2".

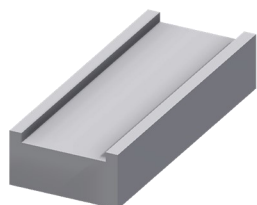
Guide 140-11-01-00401, 140-11-01-00402, 140-11-01-00403 or 140-11-01-00404 is required

Ask the manufacturer about different dimensions



Units per machine	Material thickness	Weight
1	From 5 to 12mm	12,5 Kg

► Entrance guide for 60 mm handrail

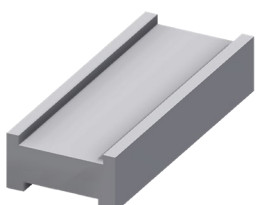


Reference: 140-11-01-00400

Entrance guide for 60 mm handrail.

Weight: 4,3 Kg.

► Entrance guide for 40 and 50 mm handrail



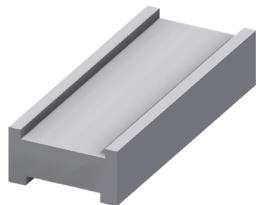
Ref: 140-11-01-00401

Inlet guide for 40 and 50 mm handrail

Weight: 4 Kg.

Accessories for Iron embossing machine NOA60

▶ Entrance guide for 1" 1/2 y 2" inches handrail

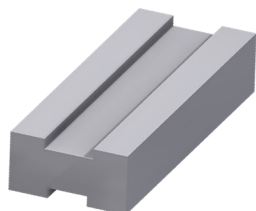


Ref: 140-11-01-00402

Inlet guide for 1" 1/2 and 2" inches handrail.

Weight: 4 Kg.

▶ Entrance guide for 25 and 30mm handrail

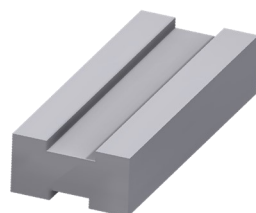


Ref: 140-11-01-00403

Inlet guide for 25 and 30 mm handrail.

Weight: 4 Kg.

▶ Entrance guide for 1" and 1" 1/4 inches handrail



Ref: 140-11-01-00404

Inlet guide for 1" and 1" 1/4 inches handrail.

Weight: 4 Kg.

▶ Rollerstand



Ref: 140-00-00-00004

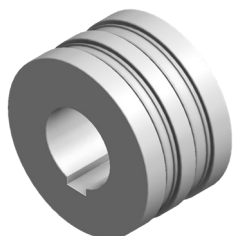
Seven-rollers stand

Ask the manufacturer about different dimensions

Working Height	Dimensions	Load capacity	Weight
650 / 1200 mm	2050x470 mm	800 Kg	65 Kg

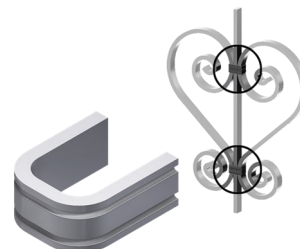
Accessories for Iron embossing machine NOA60

► Embossing roller 201



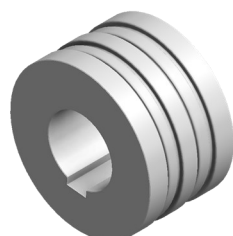
Reference: 140-11-01-00201

Roller to emboss 12 and 15 mm or 1/2 inch handrail.
For clamp forming
Guide 140-11-01-00200 is required
Ask the manufacturer about different dimensions



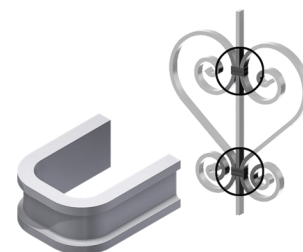
Units per machine	Material thickness	Weight
1	From 6 to 10mm	6,5 Kg

► Embossing roller 202



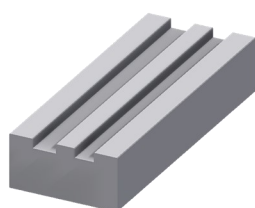
Reference: 140-11-01-00202

Roller to emboss 12 and 15 mm or 1/2 inch handrail.
For clamp forming
Guide 140-11-01-00200 is required
Ask the manufacturer about different dimensions



Units per machine	Material thickness	Weight
1	From 6 to 10mm	6,6 Kg

► Entrance guide for 12mm or 1/2" inch and 15 mm handrail

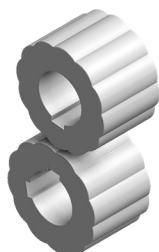


Reference: 140-11-01-00200

Entrance guide for 12 mm and 15 mm or 1/2" inch handrail
Weight: 4,6 Kg.

Accessories for Iron embossing machine NOA60

► Set of embossing rollers 26



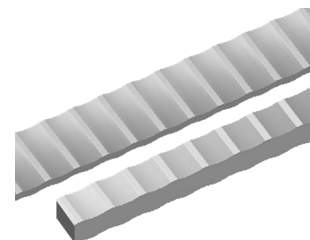
Reference: 140-11-01-00026

Rollers to emboss handrail up to 60 mm and square bar up to 20 mm or 3/4" inch

Guide 140-11-01-00401, 140-11-01-00402, 140-11-01-00400 o 140-11-01-00300 is required

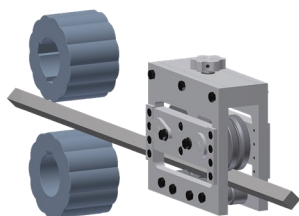
To emboss edge square bar, an entrance guide is required 140-11-01-00027

Ask the manufacturer about different dimensions



Set per machine	Material thickness	Weight
1	—	11,4 Kg

► Entrance guide for edge square bar

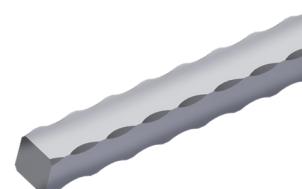


Reference: 140-11-01-00027

Entrance guide to emboss edge square bar up to 20mm or 3/4" inch

Set of embossing rollers 140-11-01-00026 is required

Weight: 18 Kg.



► Set of embossing rollers 302

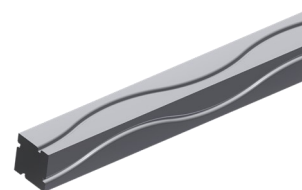


Reference: 140-11-01-00302

Rollers to emboss square bar up to 12 mm or 1/2", 16 mm or 5/8" and 18 mm.

Guide 140-11-01-00300 is required

Ask the manufacturer about different dimensions



Set per machine	Material thickness	Weight
1	—	12,6 Kg

► Set of embossing rollers 301

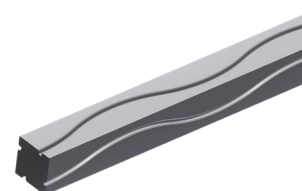


Reference: 140-11-01-00301

Rollers to emboss square bar up to 10 mm or 3/8", 14 mm or 9/16" and 20 mm or 3/4" inch

Guide 140-11-01-00300 is required

Ask the manufacturer about different dimensions



Set per machine	Material thickness	Weight
1	—	12,6 Kg

Accessories for Iron embossing machine NOA60

► Set of embossing rollers 303

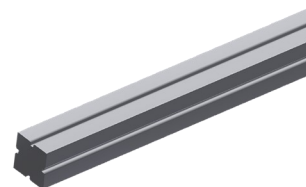


Reference: 140-11-01-00303

Rollers to emboss square bar up to 10 mm or 3/8", 14 mm or 9/16" and 20 mm or 3/4" inch

Guide 140-11-01-00300 is required

Ask the manufacturer about different Ask the manufacturer



Units per machine	Material thickness	Weight
1	—	12,9 Kg

► Set of embossing rollers 304

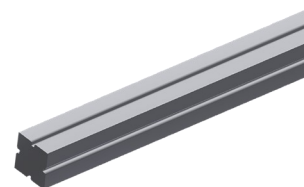


Reference: 140-11-01-00304

Rollers to emboss square bar up to 12 mm or 1/2", 16 mm or 5/8" and 18 mm.

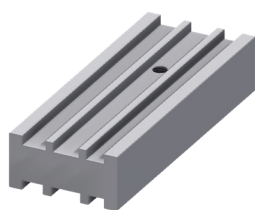
Guide 140-11-01-00300 is required

Ask the manufacturer about different dimensions



Units per machine	Material thickness	Weight
1	—	12,9 Kg

► Entrance guide for square bar



Reference: 140-11-01-00300

Entrance guide for square bar of 10mm or 3/8", 12mm or 1/2", 14mm or 9/16", 16mm or 5/8", 18mm and 20 mm or 3/4" inch

Weight: 4 Kg.

Accessories for Iron embossing machine NOA60

- ▶ Set of embossing rollers for 25 mm or 1", 30 mm or 1" 1/4, 35 and 40 mm pipes



Ref: 140-11-01-00500

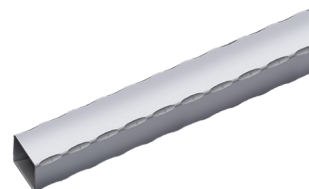
Set of sectioned rollers to emboss different square or rectangular pipe sizes with the same set. Adjustable to the following pipes:

Square pipes: 25mm or 1", 30mm or 1" 1/4, 35 and 40mm

Rectangular pipes: 25x20mm or 1"x3/4", 30x20mm or 1"1/4x3/4", 30x25mm, 35x20mm, 35x25mm, 40x20mm, 40x25mm, 40x30mm, 40x35mm

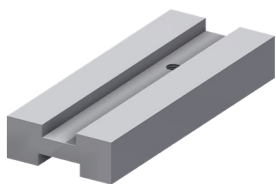
Guide 140-11-01-00501 or 140-11-01-00502 is required

Ask the manufacturer about different dimensions



Set per machine	Material minimum thickness suggested by manufacturer	Weight
1	3 mm	12 Kg

- ▶ Inlet guide for 25 mm or 1" and 30 mm or 1" 1/4 Pipe

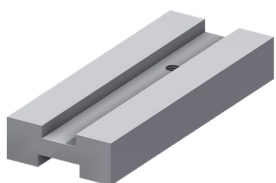


Ref: 140-11-01-00501

Inlet guide for 25 mm or 1" and 30 mm or 1" 1/4 pipe

Weight: 3 Kg.

- ▶ Inlet guide for 35 and 40 mm pipe



Ref: 140-11-01-00502

Inlet guide for 35 and 40 mm pipe

Weight: 2,8 Kg.

Accessories for Iron embossing machine NOA60

► Set of embossing rollers for 50 and 60mm pipes



Ref: 140-11-01-00503

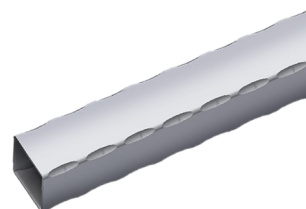
Set of sectioned rollers to emboss different square or rectangular pipe sizes with the same set. Adjustable to the following pipes:

Square pipes: 50mm or 60mm

Rectangular pipes: 50x20mm, 50x25mm, 50x30mm, 50x35mm, 50x40mm, 50x45mm, 60x20mm, 60x25mm, 60x30mm, 60x35mm, 60x40mm, 60x45mm, 60x50mm or 60x55mm

Guide 140-11-01-00505 or 140-11-01-00506 is required

Ask the manufacturer about different dimensions



Set per machine	Material minimum thickness suggested by manufacturer	Weight
1	3 mm	6 Kg

► Inlet guide for 50 mm pipe



Ref: 140-11-01-00505

Inlet guide for 50 mm pipe

Weight: 2,4 Kg.

► Inlet guide for 60 mm pipe



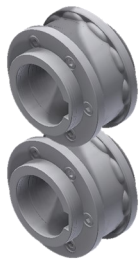
Ref: 140-11-01-00506

Inlet guide for 60 mm pipe

Weight: 2,2 Kg.

Accessories for Iron embossing machine NOA60

- ▶ Set of embossing rollers for 1" 1/2, 2" and 2" 1/2 inches pipes



Ref: 140-11-01-00507

Set of sectioned rollers to emboss different square or rectangular pipe sizes with the same set. Adjustable to the following pipes:

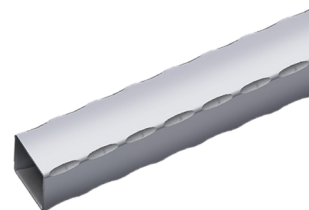
Square pipes: 1" 1/2, 2" and 2" 1/2 inches

Rectangular pipes: 1"1/2x3/4", 1"1/2x1", 2"x1", 2"x1"1/4, 2"x1"1/2, 2"1/2x1"1/2 inches

Guide 140-11-01-00508, 140-11-01-00509

or 140-11-01-00510 is required

Ask the manufacturer about different dimensions



Set per machine	Material minimum thickness suggested by manufacturer	Weight
1	3 mm	6 Kg

- ▶ Inlet guide for 1" 1/2 inches pipe



Ref: 140-11-01-00508

Inlet guide for 1" 1/2 inches pipe

Weight: 2,6 Kg.

- ▶ Inlet guide for 2" inches pipe



Ref: 140-11-01-00509

Inlet guide for 2" inches pipe

Weight: 2,4 Kg.

- ▶ Inlet guide for 2" 1/2 inches pipe



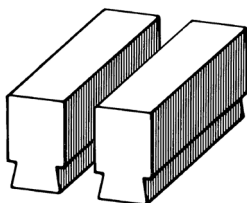
Ref: 140-11-01-00510

Inlet guide for 2" 1/2 inches pipe

Weight: 2,2 Kg.

Accessories for Power hammer

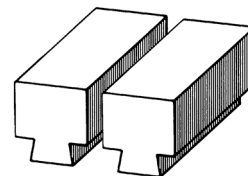
Reference 140-14-01-00001



Dimensions

120x60 mm

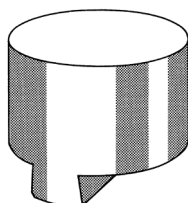
Reference 140-14-01-00002



Dimensions

160x80 mm

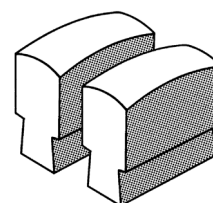
Reference 140-14-01-00003



Dimensions

Ø 200 mm

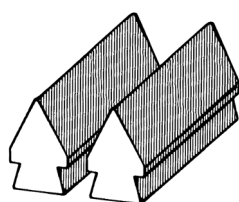
Reference 140-14-01-00004



Dimensions

100x60 mm

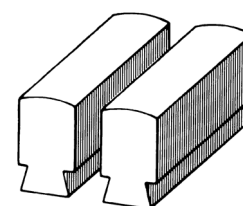
Reference 140-14-01-00005



Dimensions

120x60 mm

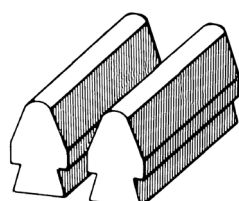
Reference 140-14-01-00006



Dimensions

120x60 mm

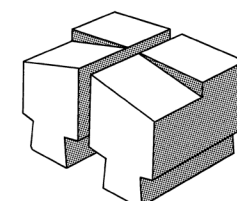
Reference 140-14-01-00007



Dimensions

120x60 mm

Reference 140-14-01-00008

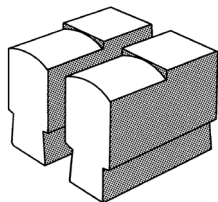


Dimensions

130x100 mm

Accessories for Power hammer

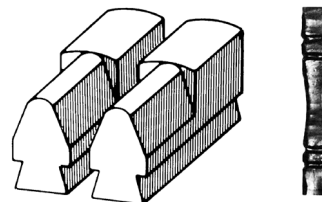
Reference 140-14-01-00009



Dimensions

120x60 mm

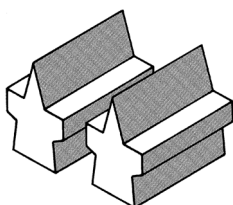
Reference 140-14-01-00010



Dimensions

120x60 mm

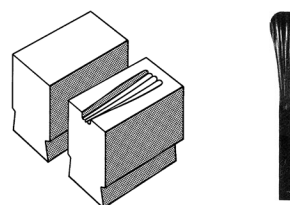
Reference 140-14-01-00011



Dimensions

L110 mm

Reference 140-14-01-00012



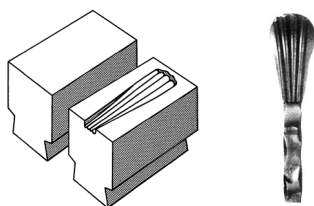
Dimensions

100x60 mm

Capacity

12x6 mm

Reference 140-14-01-00013



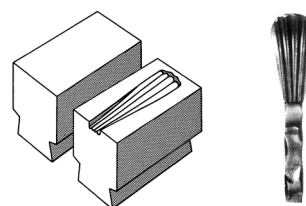
Dimensions

120x60 mm

Capacity

16x8 / Ø12 mm

Reference 140-14-01-00014



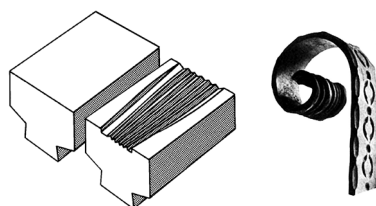
Dimensions

120x80 mm

Capacity

20x6 / 25x8 mm

Reference 140-14-01-00015



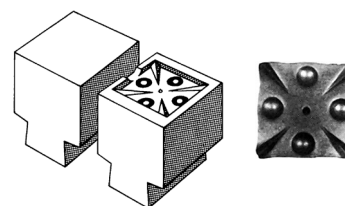
Dimensions

130x80 mm

Capacity

40x8 / 30x12 mm

Reference 140-14-01-00016



Dimensions

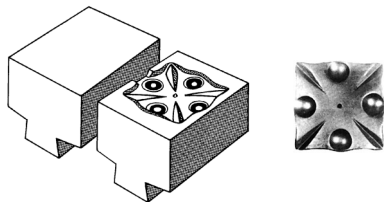
80x80 mm

Capacity

60x60 mm

Accessories for Power hammer

Reference 140-14-01-00017



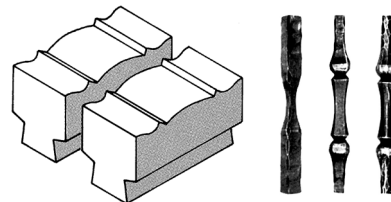
Dimensions

100x100 mm

Capacity

80x80 mm

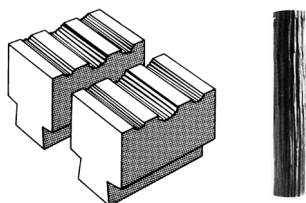
Reference 140-14-01-00018



Dimensions

160x80 mm

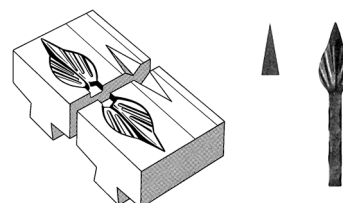
Reference 140-14-01-00019



Dimensions

130x80 mm

Reference 140-14-01-00020



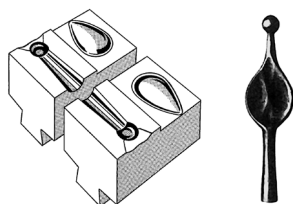
Dimensions

120x100 mm

Capacity

12x12 mm

Reference 140-14-01-00021



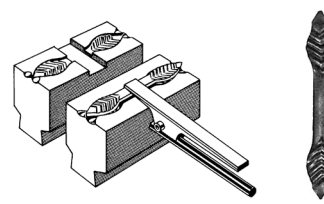
Dimensions

120x70 mm

Capacity

Ø14 mm

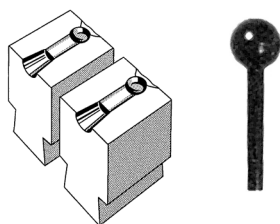
Reference 140-14-01-00022



Dimensions

135x60 mm

Reference 140-14-01-00023



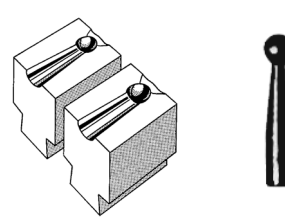
Dimensions

70x60 mm

Capacity

Ø16 mm

Reference 140-14-01-00024



Dimensions

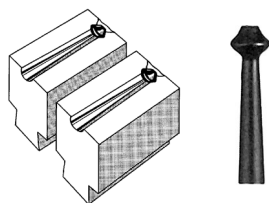
70x60 mm

Capacity

Ø16 mm

Accessories for Power hammer

Reference 140-14-01-00025



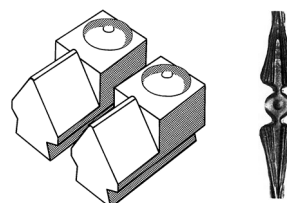
Dimensions

70x60 mm

Capacity

Ø12 mm

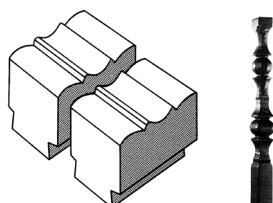
Reference 140-14-01-00026



Dimensions

120x60 mm

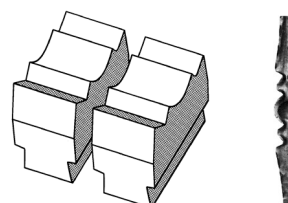
Reference 140-14-01-00027



Dimensions

100x60 mm

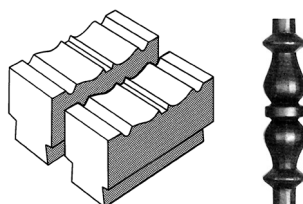
Reference 140-14-01-00028



Dimensions

130x60 mm

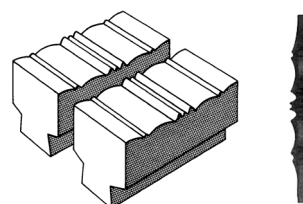
Reference 140-14-01-00029



Dimensions

160x80 mm

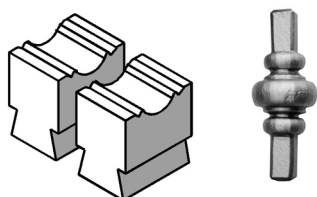
Reference 140-14-01-00030



Dimensions

160x80 mm

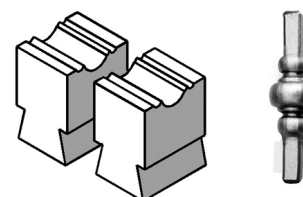
Reference 140-14-01-00031



Dimensions

100x60 mm

Reference 140-14-01-00032

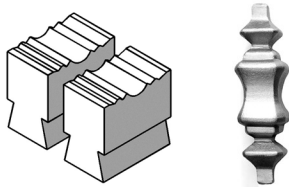


Dimensions

100x60 mm

Accessories for Power hammer

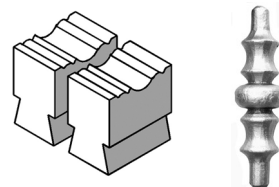
Reference 140-14-01-00033



Dimensions

160x80 mm

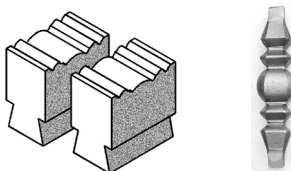
Reference 140-14-01-00034



Dimensions

150x60 mm

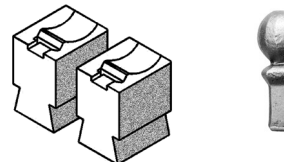
Reference 140-14-01-00035



Dimensions

180x80 mm

Reference 140-14-01-00036



Dimensions

100x60 mm

Reference 140-14-01-00037

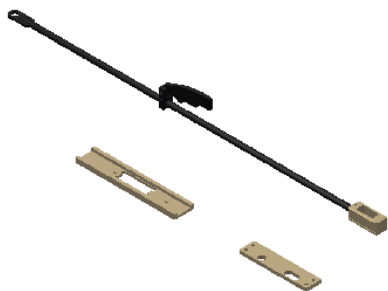


Dimensions

120x60 mm

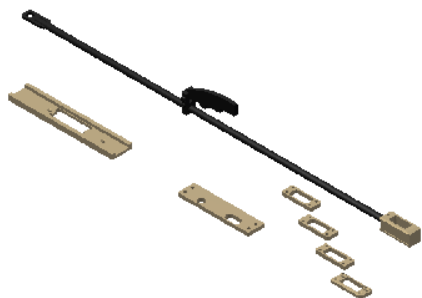
Accessories for Hydraulic press for locks PI85

► Tooling for 35X35. Wall thickness 1,5mm



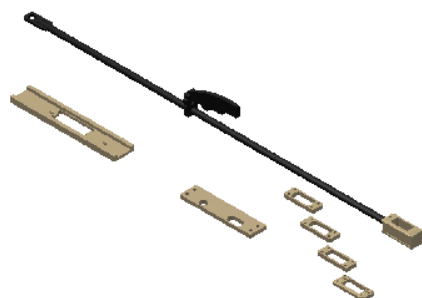
Reference	140-07-01-00001
Pipe	35 x 35 mm
Thickness	1,5 mm
Pieces by tooling	3 units
Weight	5 Kg

► Tooling for 40x40mm up to 40x80mm. Wall 1,5mm



Reference	140-07-01-00003
Pipe	40x40 mm, 40x50 mm, 40x60 mm, 40x70 mm, 40x80mm
Thickness	1,5 mm
Pieces by tooling	8 units
Weight	5,3 Kg

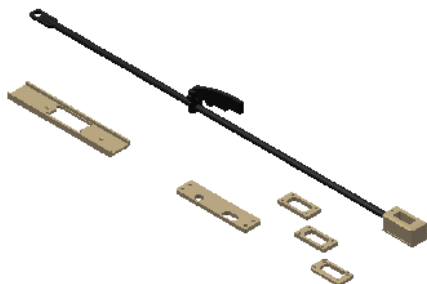
► Tooling for 40x40mm up to 40x80mm. Wall 2mm



Reference	140-07-01-00004
Pipe	40x40 mm, 40x50 mm, 40x60 mm, 40x70 mm, 40x80mm
Thickness	2 mm
Pieces by tooling	8 units
Weight	5,3 Kg

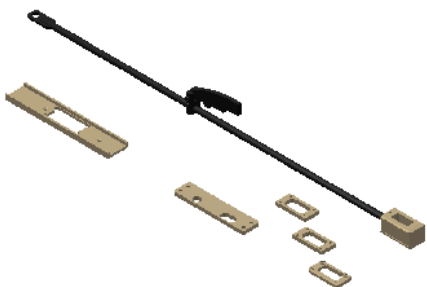
Accessories for Hydraulic Press for locks PI85

- Tooling for 50x50mm up to 50x80mm. Wall 1,5mm



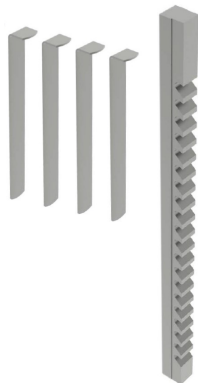
Reference	140-07-01-00005
Pipe	50x50 mm, 50x60 mm, 50x70 mm, 50x80mm
Thickness	1,5 mm
Pieces by tooling	7 units
Weight	5,5 Kg

- Tooling for 50x50 up to 50x80mm. Wall 2mm



Reference	140-07-01-00006
Pipe	50x50 mm, 50x60 mm, 50x70 mm, 50x80mm
Thickness	2 mm
Pieces by tooling	7 units
Weight	5,5 Kg

Accessories for the Broaching machine BM25

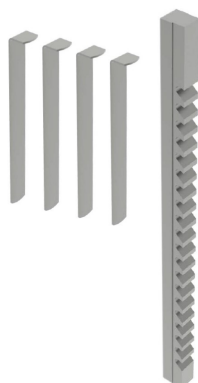


Broaching time
5:00 min.

Keyway broaches 25mm

REF: 125-09-01-BR-00017

Tolerance	JS9 (-0,027 +0,013)
Model	F
Broach dimensions	25,40 x 514,35mm
Standard keys	25 x 14mm
Min./Max. Cutting length	25,4mm / 152,4mm
Required pressure	12.300lbs / 5.579,18Kg
Required shims/ Nr of passes	4 shims / 5 passes
Thickness	1,422mm
Bushing diameter	75, 80, 85, 90, 95, 100, 105, 110, 115 and 120mm
Bushing length	152,4mm
Weight	3,5 Kg. Approx.

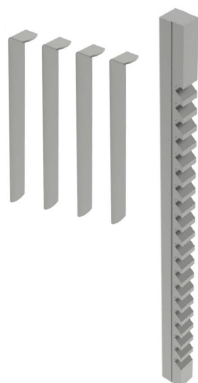


Broaching time
5:00 min.

Keyway broaches 24mm

REF: 125-09-01-BR-00016

Tolerance	JS9 (-0,025 +0,015)
Model	F
Broach dimensions	25,40 x 514,35mm
Standard keys	24 x 14mm
Min./Max. Cutting length	25,4mm / 152,4mm
Required pressure	10.600lbs / 4.808,07Kg
Required shims/ Nr of passes	5 shims / 6 passes
Thickness	1,587mm
Bushing diameter	75, 80, 85, 90, 95, 100, 105, 110, 115 and 120mm
Bushing length	152,4mm
Weight	3,5 Kg. Approx.



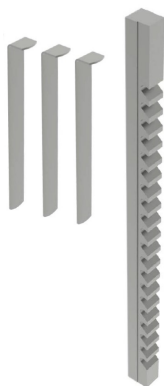
Broaching time
5:00 min.

Keyway broaches 22mm

REF: 125-09-01-BR-00015

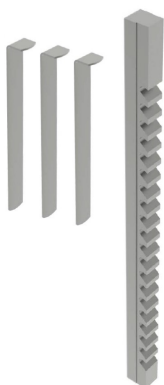
Tolerance	JS9 (-0,027 +0,014)
Model	F
Broach dimensions	25,40 x 514,35mm
Standard keys	22 x 14mm
Min./Max. Cutting length	25,4mm / 152,4mm
Required pressure	9.400lbs / 4.263,76Kg
Required shims/ Nr of passes	4 shims / 5 passes
Thickness	1,422mm
Bushing diameter	75, 80, 85, 90, 95, 100, 105, 110, 115 and 120mm
Bushing length	152,4mm
Weight	3,5 Kg. Approx.

Accessories for the Broaching machine BM25



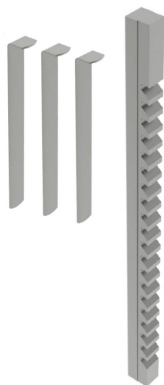
Broaching time
4:20 min.

Keyway broaches 20mm		REF: 125-09-01-BR-00014
Tolerance		JS9 (-0,026 +0,015)
Model		F
Broach dimensions		25,40 x 514,35mm
Standard keys		20 x 12mm
Min./Max. Cutting length		25,4mm / 152,4mm
Required pressure		8.800lbs / 3.991,61Kg
Required shims/ Nr of passes		3 shims / 4 passes
Thickness		1,587mm
Bushing diameter	75, 80, 85, 90, 95, 100, 105, 110, 115 and 120mm	
Bushing length		152,4mm
Weight		3,5 Kg. Approx.



Broaching time
3:40 min.

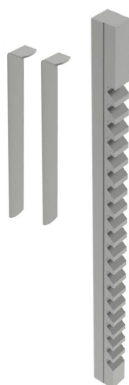
Brochas de 18mm		REF: 125-09-01-BR-00013
Tolerance		JS9 (-0,022 +0,013)
Model		E
Broach dimensions		19,05 x 393,7mm
Standard keys		18 x 11mm
Min./Max. Cutting length		25,4mm / 152,4mm
Required pressure		10.600lbs / 4.808,07Kg
Required shims/ Nr of passes		3 shims / 4 passes
Thickness		1,422mm
Bushing diameter	52, 54, 55, 56, 58, 60, 62, 63, 64, 65, 66, 68, 70 and 72mm	
Bushing length		127 and 152,4mm
Weight		1,5 Kg. Approx.



Broaching time
3:40 min.

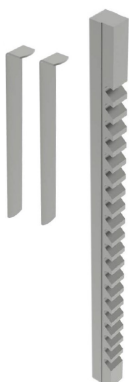
Brochas de 16mm		REF: 125-09-01-BR-00012
Tolerance		JS9 (-0,024 +0,012)
Model		E
Broach dimensions		19,05 x 393,7mm
Standard keys		16 x 10mm
Min./Max. Cutting length		25,4mm / 152,4mm
Required pressure		9.400lbs / 4.263,76Kg
Required shims/ Nr of passes		3 shims / 4 passes
Thickness		1,422mm
Bushing diameter	52, 54, 55, 56, 58, 60, 62, 63, 64, 65, 66, 68, 70 and 72mm	
Bushing length		127 and 152,4mm
Weight		1,5 Kg. Approx.

Accessories for the Broaching machine BM25



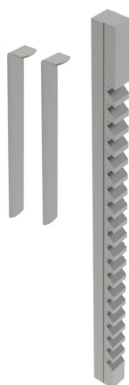
Broaching time

Keyway broaches 14mm		REF: 125-09-01-BR-00011
Tolerance		JS9 (-0,023 +0,013)
Model		D
Broach dimensions		14,28 x 352,42mm
Standard keys		14 x 9mm
Min./Max. Cutting length		25,4mm / 152,4mm
Required pressure		11.100lbs / 5.034,87Kg
Required shims/ Nr of passes		2 shims / 3 passes
Thickness		1,587mm
Bushing diameter	32, 34, 35, 36, 38, 40, 42, 44, 45, 46, 48, 50, 52, 54 and 56mm	
Bushing length		101,6 and 127mm
Weight		1 Kg. Approx.



Broaching time
2:30 min.

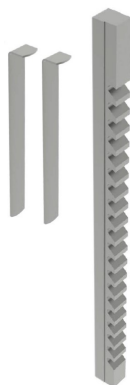
Keyway broaches 12mm		REF: 125-09-01-BR-00010
Tolerance		JS9 (-0,022 +0,014)
Model		D
Broach dimensions		14,28 x 352,42mm
Standard keys		12 x 8mm
Min./Max. Cutting length		25,4mm / 152,4mm
Required pressure		8.400lbs / 3.810,17Kg
Required shims/ Nr of passes		2 shims / 3 passes
Thickness		1,422mm
Bushing diameter	32, 34, 35, 36, 38, 40, 42, 44, 45, 46, 48, 50, 52, 54 and 56mm	
Bushing length		101,6 and 127mm
Weight		1 Kg. Approx.




Broaching time
2:30 min.

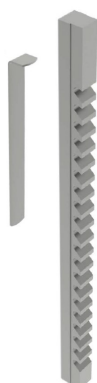
Keyway broaches 10mm		REF: 125-09-01-BR-00009
Tolerance		JS9 (-0,018 +0,012)
Model		D
Broach dimensions		14,28 x 352,42mm
Standard keys		10 x 8mm
Min./Max. Cutting length		25,4mm / 152,4mm
Required pressure		6.500lbs / 2.948,35Kg
Required shims/ Nr of passes		2 shims / 3 passes
Thickness		1,422mm
Bushing diameter	32, 34, 35, 36, 38, 40, 42, 44, 45, 46, 48, 50, 52, 54 and 56mm	
Bushing length		101,6 and 127mm
Weight		1 Kg. Approx.


Accessories for the Broaching machine BM25



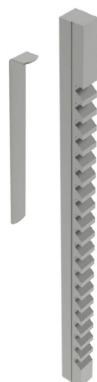
 Broaching time
2:30 min.


Keyway broaches 8mm		REF: 125-09-01-BR-00008
Tolerance	JS9 (-0,017 +0,013)	
Model	C	
Broach dimensions	9,52 x 298,45mm	
Standard keys	8 x 7mm	
Min./Max. Cutting length	9,921mm / 63,5mm	
Required pressure	3.680lbs / 1.669,22Kg	
Required shims/ Nr of passes	2 shims / 3 passes	
Thickness	1,27mm	
Bushing diameter	18, 19, 20, 22, 24, 25, 26, 28, 30, 32, 34, 35 and 36mm	
Bushing length	63,5mm	
Weight	0,350 Kg. Approx.	



 Broaching time
1:20 min.

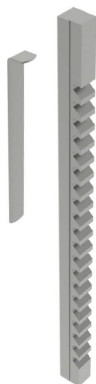
Keyway broaches 6mm		REF: 125-09-01-BR-00006
Tolerance	JS9 (-0,016 +0,009)	
Model	C	
Broach dimensions	9,52 x 298,45mm	
Standard keys	6 x 6mm	
Min./Max. Cutting length	9,921mm / 63,5mm	
Required pressure	2.100lbs / 952,54Kg	
Required shims/ Nr of passes	1 shim / 2 passes	
Thickness	1,587mm	
Bushing diameter	18, 19, 20, 22, 24, 25, 26, 28, 30, 32, 34, 35 and 36mm	
Bushing length	63,5mm	
Weight	0,350 Kg. Approx.	



 Broaching time
1:20 min.

Keyway broaches 5mm		REF: 125-09-01-BR-00005
Tolerance	JS9 (-0,014 +0,008)	
Model	C	
Broach dimensions	9,52 x 298,45mm	
Standard keys	5 x 5mm	
Min./Max. Cutting length	9,921mm / 63,5mm	
Required pressure	1.470lbs / 666,78Kg	
Required shims/ Nr of passes	1 shim / 2 passes	
Thickness	1,193mm	
Bushing diameter	18, 19, 20, 22, 24, 25, 26, 28, 30, 32, 34, 35 and 36mm	
Bushing length	63,5mm	
Weight	0,350 Kg. Approx.	

Accessories for the Broaching machine BM25

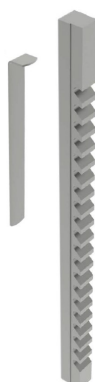


Broaching time
1:00 min.

Keyway broaches 5mm

REF: 125-09-01-BR-00004

Tolerance	JS9 (-0,014 +0,008)
Model	B1
Broach dimensions	6,35 x 171,45mm
Standard keys	5 x 5mm
Min./Max. Cutting length	7,54mm / 42,862mm
Required pressure	1.860lbs / 843,68Kg
Required shims/ Nr of passes	1 shim / 2 passes
Thickness	1,27mm
Bushing diameter	12, 14, 15, 16, 17, 18 and 19mm
Bushing length	42,862mm
Weight	0,100 Kg. Approx.

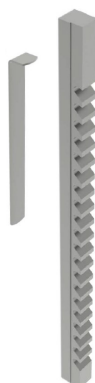


Tiempo de brochado
1:00 min.

Keyway broaches 4mm

REF: 125-09-01-BR-00003

Tolerance	JS9 (-0,015 +0,01)
Model	B1
Broach dimensions	6,35 x 171,45mm
Standard keys	4 x 4mm
Min./Max. Cutting length	7,54mm / 42,862mm
Required pressure	1.140lbs / 517,09Kg
Required shims/ Nr of passes	1 shim / 2 passes
Thickness	0,965mm
Bushing diameter	12, 14, 15, 16, 17, 18 and 19mm
Bushing length	42,862mm
Weight	0,100 Kg. Approx.



Tiempo de brochado
0:45 min.

Keyway broaches 3mm

REF: 125-09-01-BR-00002

Tolerance	JS9 (-0,013 +0,009)
Model	A
Broach dimensions	3,175 x 127mm
Standard keys	3 x 3mm
Min./Max. Cutting length	5,159mm / 28,575mm
Required pressure	650lbs / 294,83Kg
Required shims/ Nr of passes	1 shim / 2 passes
Thickness	0,787mm
Bushing diameter	6, 8, 10, 12 and 15mm
Bushing length	28,575mm
Weight	0,020 Kg. Approx.

Accessories for the Broaching machine BM25

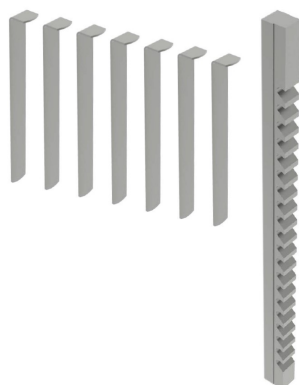


Broaching time
0:30 min.

Keyway broaches 2mm

REF: 125-09-01-BR-00001

Tolerance	JS9 (-0,014 +0,009)
Model	A
Broach dimensions	3,175 x 127mm
Standard keys	2 x 2mm
Min./Max. Cutting length	5,159mm / 28,575mm
Required pressure	720lbs / 326,58Kg
Required shims/ Nr of passes	0 shims / 1 pass
Bushing diameter	6, 8, 10, 12 and 15mm
Bushing length	28,575mm
Weight	0,020 Kg. Approx.

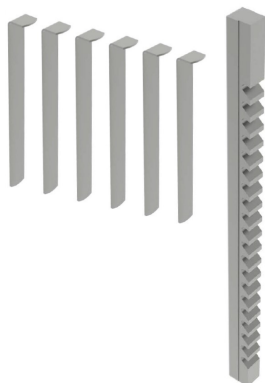


Broaching time
8:00 min.

Keyway broaches 1 inch

REF: 125-09-01-BRP-00020

Tolerance	JS9 (1,0015 · 1,0025)
Model	F
Broach dimensions	1 x 20 1/4 inches
Min./Max. Cutting length	1 inch / 6 inches
Required pressure	11.100lbs
Required shims/ Nr of passes	7 shims / 8 passes
Thickness	0,0625 inches
Bushing diameter	3 1/16, 3 1/8, 3 3/16, 3 1/4, 3 5/16, 3 3/8, 3 7/16, 3 1/2, 3 9/16, 3 5/8, 3 11/16, 3 3/4, 3 13/16, 3 7/8, 3 15/16, 4, 4 1/16, 4 1/8, 4 3/16, 4 1/4, 4 5/16, 4 3/8, 4 7/16, 4 1/2, 7 9/16, 4 5/8, 4 11/16, 4 3/4, 4 13/16, 4 7/8, 4 15/16 and 5 inches
Bushing length	6 inches
Weight	3,500 Kg. Approx.



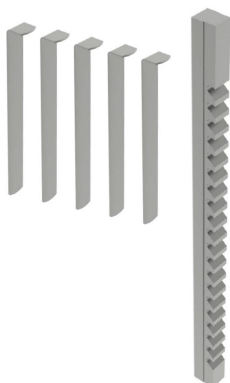
Broaching time
6:00 min.

Keyway broaches 7/8 inch

REF: 125-09-01-BRP-00019

Tolerance	JS9 (0,8765 · 0,8775)
Model	F
Broach dimensions	1 x 20 1/4 inches
Min./Max. Cutting length	1 inch / 6 inches
Required pressure	9.800lbs
Required shims/ Nr of passes	6 shims / 7 passes
Thickness	0,0625 inches
Bushing diameter	3 1/16, 3 1/8, 3 3/16, 3 1/4, 3 5/16, 3 3/8, 3 7/16, 3 1/2, 3 9/16, 3 5/8, 3 11/16, 3 3/4, 3 13/16, 3 7/8, 3 15/16, 4, 4 1/16, 4 1/8, 4 3/16, 4 1/4, 4 5/16, 4 3/8, 4 7/16, 4 1/2, 7 9/16, 4 5/8, 4 11/16, 4 3/4, 4 13/16, 4 7/8, 4 15/16 and 5 inches
Bushing length	6 inches
Weight	3,500 Kg. Approx.

Accessories for the Broaching machine BM25

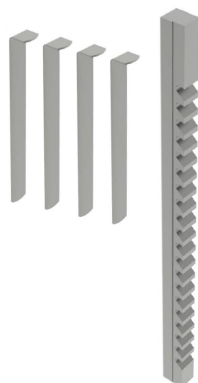


Broaching time
5:00 min.

Keyway broaches 3/4 inch

REF: 125-09-01-BRP-00018

Tolerance	JS9 (0,7515 · 0,7525)
Model	E
Broach dimensions	3/4 x 15 1/2 inches
Min./Max. Cutting length	1 pulgada / 6 inches
Required pressure	11.900lbs
Required shims/ Nr of passes	5 shims / 6 passes
Thickness	0,0625 inches
Bushing diameter	2 5/16, 2 3/8, 2 7/16, 2 1/2, 2 9/16, 2 5/8, 2 11/16, 2 3/4, 2 13/16, 2 7/8, 2 15/16, 3, 3 1/16, 3 1/8, 3 3/16, 3 1/4, 3 5/16, 3 3/8, 3 7/16, 3 1/2, 3 9/16, 3 5/8, 3 11/16, 3 3/4, 3 13/16, 3 7/8, 3 15/16 and 4 inches
Bushing length	6 inches
Weight	1,500 Kg. Approx.

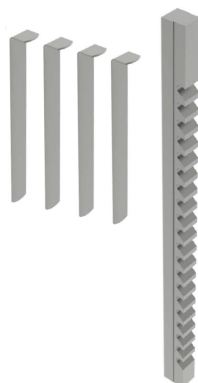


Broaching time
4:00 min.

Keyway broaches 5/8 inch

REF: 125-09-01-BRP-00017

Tolerance	JS9 (0,6260 · 0,6270)
Model	E
Broach dimensions	3/4 x 15 1/2 inches
Min./Max. Cutting length	1 inch / 6 inches
Required pressure	9.600lbs
Required shims/ Nr of passes	4 shims / 5 passes
Thickness	0,0625 inches
Bushing diameter	2 5/16, 2 3/8, 2 7/16, 2 1/2, 2 9/16, 2 5/8, 2 11/16, 2 3/4, 2 13/16, 2 7/8, 2 15/16, 3, 3 1/16, 3 1/8, 3 3/16, 3 1/4, 3 5/16, 3 3/8, 3 7/16, 3 1/2, 3 9/16, 3 5/8, 3 11/16, 3 3/4, 3 13/16, 3 7/8, 3 15/16 and 4 inches
Bushing length	6 inches
Weight	1,500 Kg. Approx.



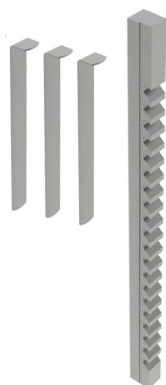
Broaching time
3:40 min.

Keyway broaches 9/16 inch

REF: 125-09-01-BRP-00016

Tolerance	JS9 (0,5631 · 0,5641)
Model	D
Broach dimensions	9/16 x 13 7/8 inches
Min./Max. Cutting length	1 inch / 6 inches
Required pressure	8.900lbs
Required shims/ Nr of passes	4 shims / 5 passes
Thickness	0,0560 inches
Bushing diameter	1 7/16, 1 1/2, 1 9/16, 1 5/8, 1 11/16, 1 3/4, 1 13/16, 1 7/8, 1 15/16, 2, 2 1/16, 2 1/8, 2 3/16, 2 1/4, 2 5/16, 2 3/8, 2 7/16, 2 1/2, 2 9/16, 2 5/8, 2 11/16, 2 3/4, 2 13/16, 2 7/8, 2 15/16 and 3 inches
Bushing length	6 inches
Weight	1,00 Kg. Approx.

Accessories for the Broaching machine BM25

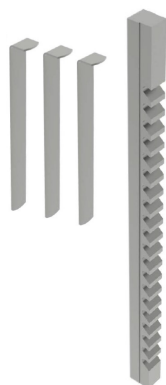


Broaching time
3:00 min.

Keyway broaches 1/2 inch

REF: 125-09-01-BRP-00015

Tolerance	JS9 (0,5006 · 0,5016)
Model	D
Broach dimensions	9/16 x 13 7/8 inches
Min./Max. Cutting length	1 inch / 6 pulgadas
Required pressure	9.800lbs
Required shims/ Nr of passes	3 shims / 4 passes
Thickness	0,0625 inches
Bushing diameter	1 7/16, 1 1/2, 1 9/16, 1 5/8, 1 11/16, 1 3/4, 1 13/16, 1 7/8, 1 15/16, 2, 2 1/16, 2 1/8, 2 3/16, 2 1/4, 2 5/16, 2 3/8, 2 7/16, 2 1/2, 2 9/16, 2 5/8, 2 11/16, 2 3/4, 2 13/16, 2 7/8, 2 15/16 and 3 inches
Bushing length	4 inches
Weight	1,00 Kg. Approx.

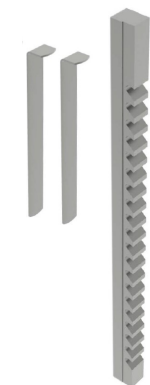


Broaching time
3:00 min.

Keyway broaches 7/16 inch

REF: 125-09-01-BRP-00014

Tolerance	JS9 (0,4380 · 0,4390)
Model	D
Broach dimensions	9/16 x 13 7/8 inches
Min./Max. Cutting length	1 inch / 6 inches
Required pressure	9.400lbs
Required shims/ Nr of passes	3 shims / 4 passes
Thickness	0,0560 inches
Bushing diameter	1 7/16, 1 1/2, 1 9/16, 1 5/8, 1 11/16, 1 3/4, 1 13/16, 1 7/8, 1 15/16, 2, 2 1/16, 2 1/8, 2 3/16, 2 1/4, 2 5/16, 2 3/8, 2 7/16, 2 1/2, 2 9/16, 2 5/8, 2 11/16, 2 3/4, 2 13/16, 2 7/8, 2 15/16 and 3 inches
Bushing length	4 inches
Weight	1,00 Kg. Approx.



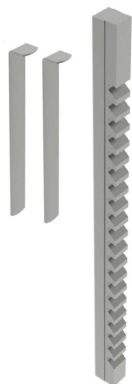
Broaching time
2:30 min.

Keyway broaches 3/8 inch

REF: 125-09-01-BRP-00013

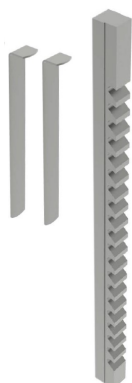
Tolerance	JS9 (0,3755 · 0,3765)
Model	D
Broach dimensions	9/16 x 13 7/8 inches
Min./Max. Cutting length	1 inch / 6 inches
Required pressure	7.000lbs
Required shims/ Nr of passes	2 shims / 3 passes
Thickness	0,0625 inches
Bushing diameter	1 7/16, 1 1/2, 1 9/16, 1 5/8, 1 11/16, 1 3/4, 1 13/16, 1 7/8, 1 15/16, 2, 2 1/16, 2 1/8, 2 3/16, 2 1/4, 2 5/16, 2 3/8, 2 7/16, 2 1/2, 2 9/16, 2 5/8, 2 11/16, 2 3/4, 2 13/16, 2 7/8, 2 15/16 and 3 inches
Bushing length	4 inches
Weight	1,00 Kg. Approx.

Accessories for the Broaching machine BM25



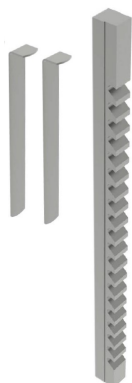
Broaching time
2:30 min.

Keyway broaches 5/16 inch	REF: 125-09-01-BRP-00012
Tolerance	JS9 (0,3127 · 0,3137)
Model	D
Broach dimensions	9/16 x 13 7/8 inches
Min./Max. Cutting length	1 inch / 6 inches
Required pressure	8.000lbs
Required shims/ Nr of passes	2 shims / 3 passes
Thickness	0,0560 inches
Bushing diameter	1 7/16, 1 1/2, 1 9/16, 1 5/8, 1 11/16, 1 3/4, 1 13/16, 1 7/8, 1 15/16, 2, 2 1/16, 2 1/8, 2 3/16, 2 1/4, 2 5/16, 2 3/8, 2 7/16, 2 1/2, 2 9/16, 2 5/8, 2 11/16, 2 3/4, 2 13/16, 2 7/8, 2 15/16 and 3 inches
Bushing length	4 inches
Weight	1,00 Kg. Approx.



Broaching time
2:30 min.

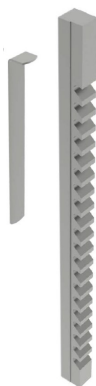
Keyway broaches 3/8 inch	REF: 125-09-01-BRP-00011
Tolerance	JS9 (0,3755 · 0,3765)
Model	C
Broach dimensions	3/8 x 11 3/4 inches
Min./Max. Cutting length	25/64 inch / 2 1/2 inches
Required pressure	4.340lbs
Required shims/ Nr of passes	2 shims / 3 passes
Thickness	0,0625 inches
Bushing diameter	3/4, 13/16, 7/8, 15/16, 1, 1 1/16, 1 1/8, 1 3/16, 1 1/4, 1 5/16, 1 3/8, 1 7/16, 1 1/2 and 1 9/16 inches
Bushing length	2 1/2 inches
Weight	0,350 Kg. Approx.



Broaching time
2:30 min.

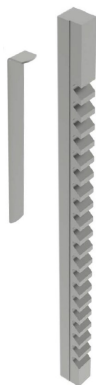
Keyway broaches 5/16 inch	REF: 125-09-01-BRP-00010
Tolerance	JS9 (0,3127 · 0,3137)
Model	C
Broach dimensions	3/8 x 11 3/4 inches
Min./Max. Cutting length	25/64 inch / 2 1/2 inches
Required pressure	3.960lbs
Required shims/ Nr of passes	2 shims / 3 passes
Thickness	0,0550 inches
Bushing diameter	3/4, 13/16, 7/8, 15/16, 1, 1 1/16, 1 1/8, 1 3/16, 1 1/4, 1 5/16, 1 3/8, 1 7/16, 1 1/2 and 1 9/16 inches
Bushing length	2 1/2 inches
Weight	0,350 Kg. Approx.

Accessories for the Broaching machine BM25



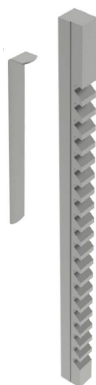
Broaching time
1:20 min.

Keyway broaches 1/4 inch		REF: 125-09-01-BRP-00009
Tolerance	JS9 (0,2502 · 0,2512)	
Model	C	
Broach dimensions	3/8 x 11 3/4 inches	
Min./Max. Cutting length	25/64 inch / 2 1/2 inches	
Required pressure	2.520lbs	
Required shims/ Nr of passes	1 shim / 2 passes	
Thickness	0,0625 inches	
Bushing diameter	3/4, 13/16, 7/8, 15/16, 1, 1 1/16, 1 1/8, 1 3/16, 1 1/4, 1 5/16, 1 3/8, 1 7/16, 1 1/2 and 1 9/16 inches	
Bushing length	2 1/2 inches	
Weight	0,350 Kg. Approx.	



Broaching time
1:20 min.

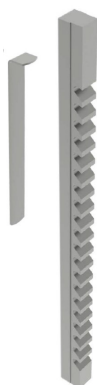
Keyway broaches 3/16 inch		REF: 125-09-01-BRP-00008
Tolerance	JS9 (0,1877 · 0,1887)	
Model	C	
Broach dimensions	3/8 x 11 3/4 inches	
Min./Max. Cutting length	25/64 inch / 2 1/2 inches	
Required pressure	1.540lbs	
Required shims/ Nr of passes	1 shim / 2 passes	
Thickness	0,0500 inches	
Bushing diameter	3/4, 13/16, 7/8, 15/16, 1, 1 1/16, 1 1/8, 1 3/16, 1 1/4, 1 5/16, 1 3/8, 1 7/16, 1 1/2 and 1 9/16 inches	
Bushing length	2 1/2 inches	
Weight	0,350 Kg. Approx.	



Broaching time
1:00 min.

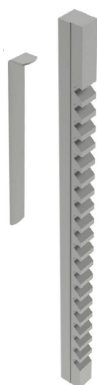
Keyway broaches 3/16 inch		REF: 125-09-01-BRP-00007
Tolerance	JS9 (0,1877 · 0,1887)	
Model	B	
Broach dimensions	3/16 x 6 3/4 inches	
Min./Max. Cutting length	19/64 inch / 1 11/16 inches	
Required pressure	1.860lbs	
Required shims/ Nr of passes	1 shim / 2 passes	
Thickness	0,0500 inches	
Bushing diameter	1/2, 9/16, 5/8, 11/16, 3/4, 13/16 and 7/8 inch	
Bushing length	1 11/16 inches	
Weight	0,100 Kg. Approx.	

Accessories for the Broaching machine BM25



Broaching time
1:00 min.

Keyway broaches 5/32 inch		REF: 125-09-01-BRP-00006
Tolerance	JS9 (0,1564 · 0,1574)	
Model	B	
Broach dimensions	3/16 x 6 3/4 inches	
Min./Max. Cutting length	19/64 inch / 1 11/16 inches	
Required pressure	1.320lbs	
Required shims/ Nr of passes	1 shim / 2 passes	
Thickness	0,0420 inches	
Bushing diameter	1/2, 9/16, 5/8, 11/16, 3/4, 13/16 and 7/8 inch	
Bushing length	1 11/16 inches	
Weight	0,100 Kg. Approx.	



Broaching time
1:00 min.

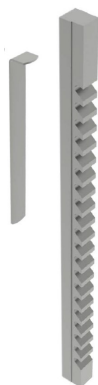
Keyway broaches 1/8 inch		REF: 125-09-01-BRP-00005
Tolerance	JS9 (0,1252 · 0,1262)	
Model	B	
Broach dimensions	3/16 x 6 3/4 inches	
Min./Max. Cutting length	19/64 inch / 1 11/16 inches	
Required pressure	720lbs	
Required shims/ Nr of passes	1 shim / 2 passes	
Thickness	0,0310 inches	
Bushing diameter	1/2, 9/16, 5/8, 11/16, 3/4, 13/16 and 7/8 inches	
Bushing length	1 11/16 inches	
Weight	0,100 Kg. Approx.	



Broaching time
0:40 min.

Keyway broaches 3/32 inch		REF: 125-09-01-BRP-00004
Tolerance	JS9 (0,0938 · 0,0948)	
Model	B	
Broach dimensions	3/16 x 6 3/4 inches	
Min./Max. Cutting length	19/64 inch / 1 11/16 inches	
Required pressure	930lbs	
Required shims/ Nr of passes	0 shims / 1 pass	
Bushing diameter	1/2, 9/16, 5/8, 11/16, 3/4, 13/16 and 7/8 inch	
Bushing length	1 11/16 inches	
Weight	0,100 Kg. Approx.	

Accessories for the Broaching machine BM25



Broaching time
0:45 min.

Keyway broaches 1/8 inch

REF: 125-09-01-BRP-00003

Tolerance	JS9 (0,1252 · 0,1262)
Model	A
Broach dimensions	1/8 x 5 inches
Min./Max. Cutting length	13/64 inch / 1 1/8 inches
Required pressure	650lbs
Required shims/ Nr of passes	1 shim / 2 passes
Thickness	0,0310 inches
Bushing diameter	1/4, 5/16, 3/8, 7/16 and 1/2 inch
Bushing length	1 1/8 inches
Weight	0,020 Kg. Approx.



Broaching time
0:30 min.

Keyway broaches 3/32 inch

REF: 125-09-01-BRP-00002

Tolerance	JS9 (0,0938 · 0,0948)
Model	A
Broach dimensions	1/8 x 5 inches
Min./Max. Cutting length	13/64 inch / 1 1/8 inches
Required pressure	780lbs
Required shims/ Nr of passes	0 shims / 1 pass
Bushing diameter	1/4, 5/16, 3/8, 7/16 and 1/2 inch
Bushing length	1 1/8 inches
Weight	0,020 Kg. Approx.



Broaching time
0:30 min.

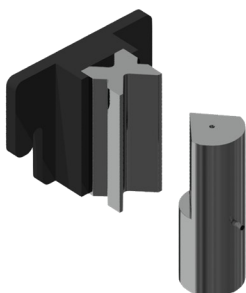
Keyway broaches 1/16 inch

REF: 125-09-01-BRP-00001

Tolerance	JS9 (0,0625 · 0,0635)
Model	A
Broach dimensions	1/8 x 5 inches
Min./Max. Cutting length	13/64 inch / 1 1/8 inches
Required pressure	390lbs
Required shims/ Nr of passes	0 shims / 1 pass
Bushing diameter	1/4, 5/16, 3/8, 7/16 and 1/2 inch
Bushing length	1 1/8 inches
Weight	0,020 Kg. Approx.

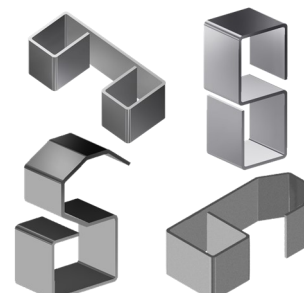
Accessories for Horizontal press brake PP200

► Folding die at 100 mm. · V16, 22 35 50 mm PP200



Folding or bending die up to 100mm with 4 openings (16, 22, 35, 50mm) and a punch of 80°. This multi-V die allows 1mm up to 8mm sheet to be folded. The 70mm outer die diameter punch allows to make completely closed shapes to a minimum of 75mm inner wing.

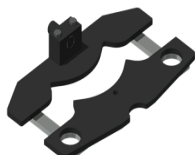
Folding die reference: 125-16-01-00006
Folding punch reference: 131-16-01-00041



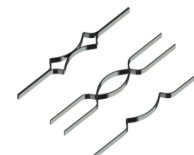
V 16: Sheet from 1 to 3mm
V 22: Sheet from 2 to 4mm
V 35: Sheet from 3 to 6mm
V 50: Sheet from 4 to 8mm
Max. Folding length: 100mm
Max. Folding thickness: 8mm

Standard tooling provided along with the machine.

► Baluster forming die 01

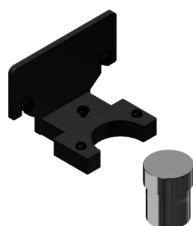


Reference: 140-16-01-00001
 Die to form cold forging balusters for grills, gates, fences, handrails, etc... For other shapes or capacities, request the manufacturer.

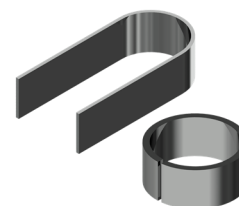


Max. width	Thickness	Die length	Weight
20mm	4, 5, 6, 8 mm	656 mm	21 Kg

► Ring forming



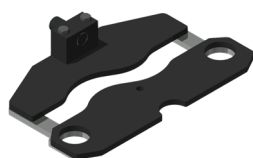
Reference: 140-16-01-00003
 Die to form rings or English banister railing, used as ornamental piece in forging railings, gates, fences, etc... for bars bonding. For other sizes and applications consult the manufacturer



Max. width	Thickness	Outer sizes	Weight
50 mm	6 mm	90 mm	9.3 Kg

Accessories for Horizontal press brake PP200

► Baluster forming die 04



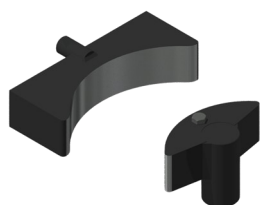
Reference: 140-16-01-00004

Die to form cold forging balusters for grills, gates, fences, handrails, etc... For other shapes or capacities, request the manufacturer.



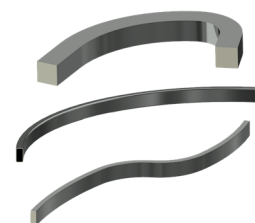
Square sizes	Die length	Weight
5, 6, 8, 10,12, 14, 16, 18 mm	600 mm	20,5 Kg

► Bending tool for big radius PP200



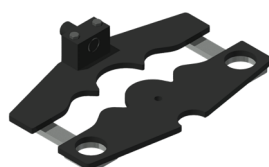
Reference: 140-16-01-00006

Die to form curves in flat bars, pipes, bars or profiles at big radius. It's perfect for bending small series or special parts without requiring a specific custom mold.



Maximum bar capacity	Maximum pipe capacity	Minimum diameter	Maximum diameter	Weight
40 mm or 1 1/2"	80x80 mm or 3"	300 mm	There is no maximum	35 Kg

► Baluster forming die 08



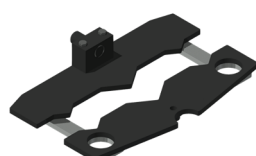
Reference: 140-16-01-00008

Die to form cold forging balusters for grills, gates, fences, handrails, etc... For other shapes or capacities, request the manufacturer.



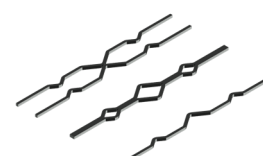
Max. width	Thickness	Die length	Weight
20 mm	4, 5, 6, 8 mm	650 mm	19,5 Kg

► Baluster forming die 09



Reference: 140-16-01-00009

Die to form cold forging balusters for grills, gates, fences, handrails, etc... For other shapes or capacities, request the manufacturer.



Flat bar size	Die length	Weight
5, 6, 8, 10,12 mm	522 mm	22 Kg

Accessories for Horizontal press brake PP200

► Baluster forming die 10



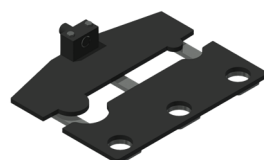
Reference: 140-16-01-00010

Die to form cold forging balusters shaped parts for grills, so called "belly top railing". For other shapes or capacities, please consult the manufacturer.



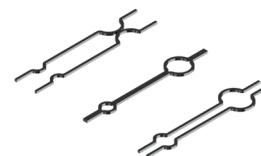
Flat bar size	Die length	Weight
12 mm	1165 mm	50 Kg

► Baluster forming die 11



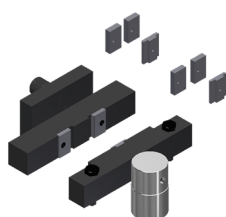
Reference: 140-16-01-00011

Die to form cold forging balusters for grills, gates, fences, handrails, etc... For other shapes or capacities, request the manufacturer.



Flat bar size	Die length	Weight
6, 8, 10,12 mm	760 mm	32,5 Kg

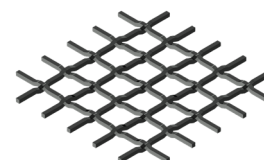
► Twisted bars forming die



Reference: 140-16-01-00013

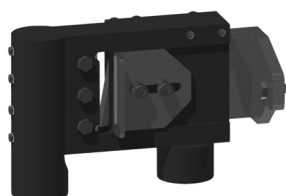
Die to bend metal plate, flat bar or square bar to obtain a nice braid twisted effect. It's very used to make fences and grills

For flat bar from 6 to 14mm. (For different sizes, please ask the manufacturer)



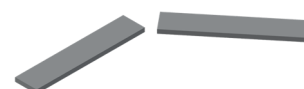
Max. capacity	Min. capacity	Weight
Square 14 mm	2x40 mm metal sheet	18 Kg

► Flat bar cutting tooling 100x10 mm. PP200



Reference: 140-16-01-00014

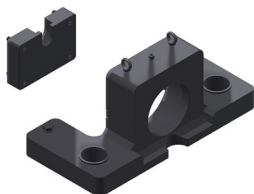
Flat bar and metal sheet cutting die up to 100mm through a maximum thickness of 10mm in mild steel.



Max. Cutting length	Max. Cutting thickness	Weight
100 mm	10 mm	23 Kg

Accessories for Horizontal press brake PP200

► Tool to shape pipe ends PP200



Reference: 140-16-01-00016

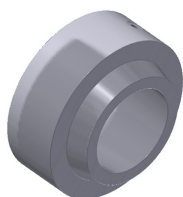
Basic die to modify the ends of the tubes for their assembly. You can make all kinds of shapes and flaps according to the customer needs. For special forms consult the manufacturer.

Weight: 110 Kg aprox.



Diameter reduction tools for PP200

Clamp holder to reduce tube PP200

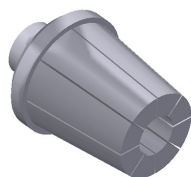


Reference: 140-16-01-RE001

This accessory is adapted to the **Tooling to shape pipe ends**, to perform the operation of reducing the ends of the tubes.

This accessory is used in all tube sizes, that is to say, it is not necessary to buy more than one since it is adaptable to all diameters.

Tube Reducer Clamp PP200

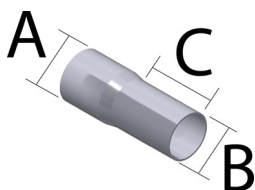


This accessory is adapted to the **Tooling to shape pipe ends**, to perform the operation of reducing the ends of the tubes.

It is necessary to buy one specific reducing clamp for each tube according to its initial diameter and the final diameter that we want to achieve.

See the following table of Reducing Clamps:

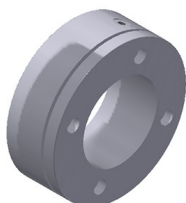
Accessories for Horizontal press brake PP200



ØA max.	ØB min.	C max.	Reference	Description
16mm	10mm	76mm	140-16-01-RE16-10	Tube Reducer Clamp 16-10 Length Max. 76mm
19mm	13mm	76mm	140-16-01-RE19-13	Tube Reducer Clamp 19-13 Length Max. 76mm
22mm	16mm	76mm	140-16-01-RE22-16	Tube Reducer Clamp 22-16 Length Max. 76mm
25mm	19mm	76mm	140-16-01-RE25-19	Tube Reducer Clamp 25-19 Length Max. 76mm
28mm	22mm	76mm	140-16-01-RE28-22	Tube Reducer Clamp 28-22 Length Max. 76mm
32mm	26mm	76mm	140-16-01-RE31-25	Tube Reducer Clamp 32-26 Length Max. 76mm
35mm	29mm	76mm	140-16-01-RE35-29	Tube Reducer Clamp 35-29 Length Max. 76mm
38mm	32mm	76mm	140-16-01-RE38-32	Tube Reducer Clamp 38-32 Length Max. 76mm
42mm	36mm	76mm	140-16-01-RE42-36	Tube Reducer Clamp 42-36 Length Max. 76mm
45mm	39mm	76mm	140-16-01-RE45-39	Tube Reducer Clamp 45-39 Length Max. 76mm
48mm	42mm	76mm	140-16-01-RE48-42	Tube Reducer Clamp 48-42 Length Max. 76mm
51mm	45mm	76mm	140-16-01-RE51-45	Tube Reducer Clamp 51-45 Length Max. 76mm
54mm	48mm	76mm	140-16-01-RE54-48	Tube Reducer Clamp 54-48 Length Max. 76mm
57mm	51mm	76mm	140-16-01-RE57-51	Tube Reducer Clamp 57-51 Length Max. 76mm
60mm	54mm	76mm	140-16-01-RE60-54	Tube Reducer Clamp 60-54 Length Max. 76mm
63mm	57mm	76mm	140-16-01-RE63-57	Tube Reducer Clamp 63-57 Length Max. 76mm
66mm	60mm	76mm	140-16-01-RE66-60	Tube Reducer Clamp 66-60 Length Max. 76mm
69mm	63mm	76mm	140-16-01-RE69-63	Tube Reducer Clamp 69-63 Length Max. 76mm
73mm	67mm	76mm	140-16-01-RE73-67	Tube Reducer Clamp 73-67 Length Max. 76mm

Diameter expansion tools PP200

Clamp Holder to Expand Tube PP200



Reference: 140-16-01-EX001

This accessory is adapted to the **Tooling to shape pipe ends**, to perform the operation of expanding the ends of the tubes.

This accessory is used in all tube sizes, that is to say, it is not necessary to buy more than one since it is adaptable to all diameters.

Accessories for Horizontal press brake PP200

Expansion Mandrel PP200

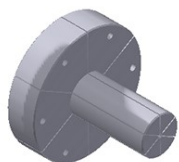


Reference: 140-16-01-EX002

This accessory is adapted to the **Tooling to shape pipe ends**, to perform the operation of expanding the ends of the tubes.

This accessory is used in all tube sizes, that is to say, it is not necessary to buy more than one since it is adaptable to all diameters.

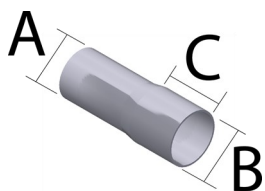
Tube Expander Clamp PP200



This accessory is adapted to the **Tooling to shape pipe ends**, to perform the operation of expanding the ends of the tubes.

It is necessary to buy one specific expanding clamp for each tube according to its initial diameter and the final diameter that we want to achieve.

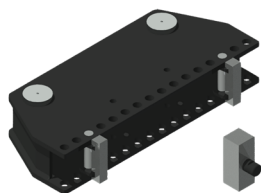
See the following table of Expanding Clamps:



ØA min.	ØB max.	C max.	Reference	Description
22mm	28mm	40mm	140-16-01-EX22-28	Tube Expander Clamp 22-28 Length Max. 40mm
25mm	31mm	40mm	140-16-01-EX25-31	Tube Expander Clamp 25-31 Length Max. 40mm
28mm	34mm	50mm	140-16-01-EX28-34	Tube Expander Clamp 28-34 Length Max. 50mm
31mm	37mm	60mm	140-16-01-EX31-37	Tube Expander Clamp 31-37 Length Max. 60mm
35mm	41mm	60mm	140-16-01-EX35-41	Tube Expander Clamp 35-41 Length Max. 60mm
38mm	44mm	65mm	140-16-01-EX38-44	Tube Expander Clamp 38-44 Length Max. 65mm
41mm	47mm	65mm	140-16-01-EX41-47	Tube Expander Clamp 41-47 Length Max. 65mm
44mm	50mm	80mm	140-16-01-EX44-50	Tube Expander Clamp 44-50 Length Max. 80mm
47mm	53mm	80mm	140-16-01-EX47-53	Tube Expander Clamp 47-53 Length Max. 80mm
51mm	57mm	80mm	140-16-01-EX51-57	Tube Expander Clamp 51-57 Length Max. 80mm
54mm	60mm	80mm	140-16-01-EX54-60	Tube Expander Clamp 54-60 Length Max. 80mm
60mm	66mm	80mm	140-16-01-EX60-66	Tube Expander Clamp 60-66 Length Max. 80mm

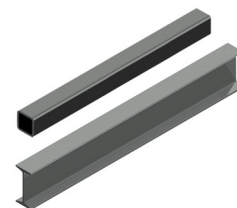
Accessories for Horizontal press brake PP200

► Die to straighten out profiles PP200



Reference: 140-16-01-00017

Tool used to bend straight profiles or parts. It is adjustable to different capacities according to the profiles.



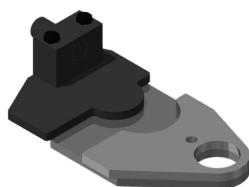
Maximum capacity

H 120 mm

Weight

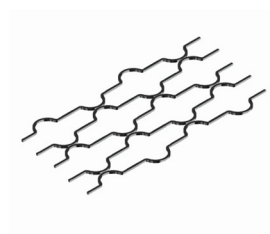
72 Kg

► Baluster forming die 20



Reference: 140-16-01-00020

Die to form cold forging balusters for grills, gates, fences, handrails, etc... For other shapes or capacities, request the manufacturer.



Square sizes

12x12 mm

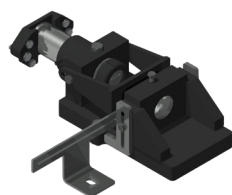
Circumference size

90 mm

Weight

11 Kg

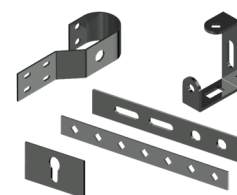
► Punching die



Reference: 140-16-01-00022

Punch-holder die, compatible with our Nargesa brand punches.

Gooseneck: 54 mm



Round

Max. Punching capacity

43 mm

Square

35 mm

Rectangular

20x34 mm

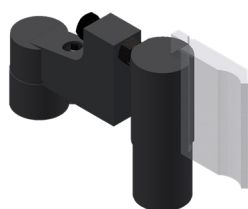
Oval

21x40 mm

Weight

52 Kg

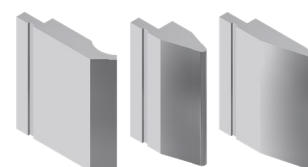
► Promecam punch holder PP200



Reference: 140-16-01-00023

Punch holder for all kind of punches for Promecam bending or folding press.

Compatible with any Promecam punch.



Max. Folding length

150 mm

Weight

14 Kg

Accessories for Horizontal press brake PP200

► Clamp forming die PP200



Reference: 140-16-01-00024

Die to form all kinds of clamps. This tooling is manufactured according to the user's needs thus it is required to have a technical drawing or a sample



Maximum capacity

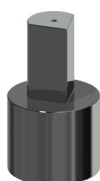
100x4 mm

► Special punches

Folding punches to bend special pieces of small sizes or folded up to 30°.



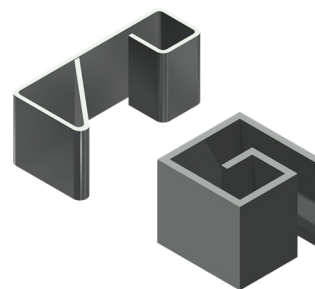
Folding Punch D70 30°
REF: 140-16-01-00025
Max. Folding length: 100mm
Punch degrees: 30°
Punch diameter: 70mm



Folding Punch D40 80°
REF: 140-16-01-00026
Max. Folding length: 60mm
Punch degrees: 80°
Punch diameter: 40mm

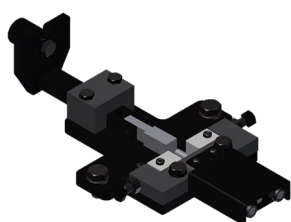


Folding Punch D22 80°
REF: 140-16-01-00027
Max. Folding length: 60mm
Punch degrees: 80°
Punch diameter: 22mm



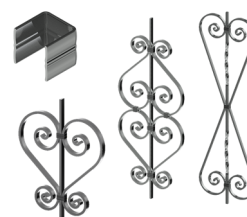
Weight: 3Kg each unit approximately

► Bar clamps forming die



Reference: 140-16-01-00028

Clamp forming die, used to manufacture the clamps used to join different forging bars with no need to get them welded.



Max. capacity

25x5 mm

Weight

9 Kg

Accessories for Horizontal press brake PP200

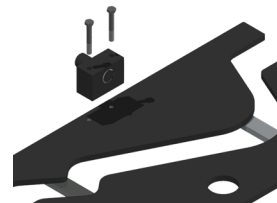
► Forming die adaptor



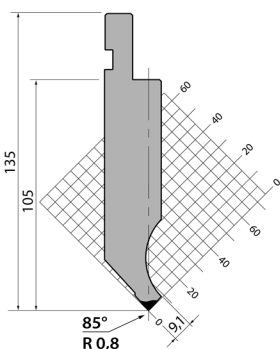
Reference: 140-16-01-00029

It is an exchangeable fitting device for the forming dies, suitable for each of the different baluster forming tools. It is advisable to get one in order to work with the specified dies.

Weight: 3,1 Kg



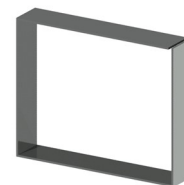
► Punch Promecam PS.135.85.R08



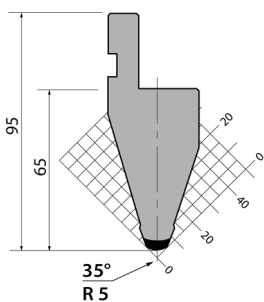
Reference: 140-16-01-00030

Folding length: 161 mm

Weight: 3,2 Kg



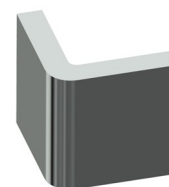
► Punch Promecam P.95.35.R5



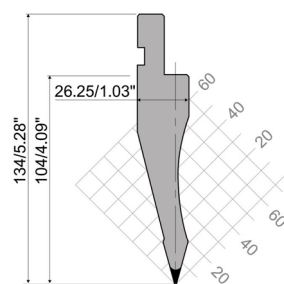
Reference: 140-16-01-00031

Folding length: 161 mm

Weight: 2,3 Kg



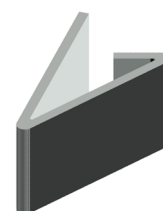
► Punch Promecam PS.134.30.R08



Reference: 140-16-01-00032

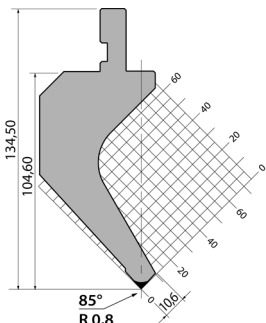
Folding length: 161 mm

Weight: 2,7 Kg



Accessories for Horizontal press brake PP200

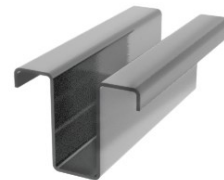
► Punch Promecam PK.135.85.R08



Reference: 140-16-01-00038

Folding length: 161 mm

Weight: 4,4 Kg



► Dies to fold thick metal sheet PP200

Promecam dies of different openings to fold sheets, flat bars or thicker plate sections up to 15mm. in order to fold even thicker sizes, ask the manufacture.



Folding die T80.25.35 PP200

REF. 140-16-01-00036

Folding length: 161mm

Thickness: From 1,5 to 5mm **Weight:** 4Kg.



Folding die M75-85-63 PP200

REF: 140-16-01-00033

Folding length: 161mm

Thickness: From 5 to 10mm **Weight:** 5Kg.



Folding die M80-85-80 PP200

REF: 140-16-01-00034

Folding length: 161mm

Thickness: From 6 to 12mm **Weight:** 6Kg.



Folding die M95-80-100 PP200

REF: 140-16-01-00035

Folding length: 161mm

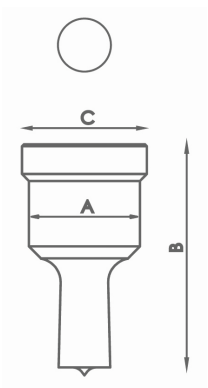
Thickness: From 8 to 15mm **Weight:** 9Kg



Accessories for Horizontal press brake PP200

► Punches and dies

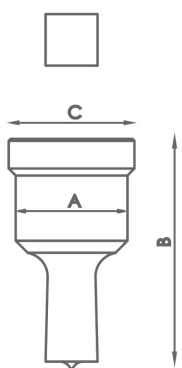
► Standard round punches



Type	Available sizes in mm Ø	A	B	C
N28	3/3'5/4/4'5/5/5'5/6/6'5/7/7'5/8/8'5 9mm up to 28mm from 0'5 in 0'5mm	28 mm	58 mm	31,5 mm
N40	29/30/31/32/33/34/35/36/37/38/39/40mm	40 mm	64 mm	43,5 mm
N50	41/42/43mm	50 mm	58 mm	54 mm

For different sizes, please ask the manufacturer.

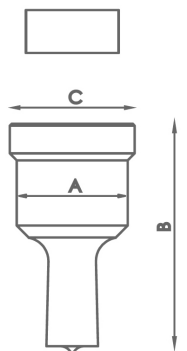
► Standard square punches



Type	Available sizes in mm Ø	A	B	C
N28	4/5/6/7/8/9/10/11/12/13/14/15/16/17/18/19/20mm	28 mm	58 mm	31,5 mm
N40	21/22/24/26/28mm	40 mm	64 mm	43,5 mm
N50	31/33/35mm	50 mm	58 mm	54 mm

For different sizes, please ask the manufacturer

► Standard rectangular punches

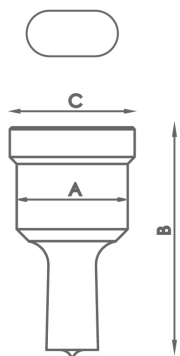


Type	Available sizes in mm Ø	A	B	C
N28	7x10/7x15/9x13/9x19/11x17/11x23 13x19/15x21mm	28 mm	58 mm	31,5 mm
N40	13x25/15x27/17x25/19x30/20x34mm	40 mm	64 mm	43,5 mm

For different sizes, please ask the manufacturer

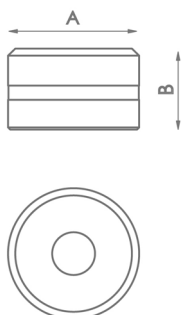
Accessories for Horizontal press brake PP200

► Standard oval punches



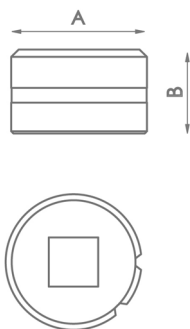
Type	Available sizes in mm Ø	A	B	C
N28	7x10/7x15/7x20/9x13/9x19/11x17/11x23/13x18 13x22/13x27/15x20/15x24/15x27/17x22/17x26 19x26/21x27mm	28 mm	58 mm	31,5 mm
N40	13x31/15x31/17x31/17x40/19x31 19x40/21x31/21x40mm	40 mm	64 mm	43,5 mm
<i>For different sizes, please ask the manufacturer</i>				

► Standard round dies



Type	Available sizes in mm	A	B
N46	3/3,5/4/4,5/5/5,5/6/6,5/7/7,5/8/8,5 9mm hasta 28mm from 0,5 in 0,5mm	46 mm	28,5 mm
N60	29/30/31/32/33/34/35/36/37/38/39/40mm	60 mm	32 mm
N78	41/42/43mm	78 mm	28,5 mm
<i>For different sizes, please ask the manufacturers.</i>			

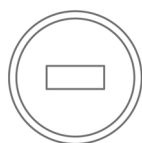
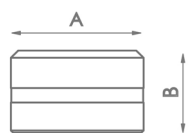
► Standard square dies



Type	Available sizes in mm	A	B
N46	4/5/6/7/8/9/10/11/12/13/14/15/16/17/18/19/20mm	46 mm	28,5 mm
N60	21/22/24/26/28mm	60 mm	32 mm
N78	31/33/35mm	78 mm	28,5 mm
<i>For different sizes, please ask the manufacturers.</i>			

Accessories for Horizontal press brake PP200

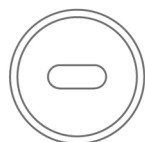
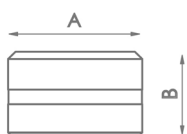
► Standard rectangular dies



Type	Available sizes in mm	A	B
N46	7x10/7x15/9x13/9x19/11x17/11x23/13x19/13x25/ 15x21mm	46 mm	28,5 mm
N60	15x27/17x25/19x30/20x34mm	60 mm	32 mm

For different sizes, please ask the manufacturers.

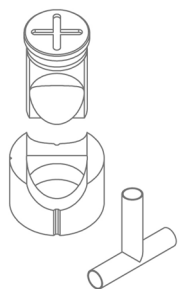
► Oval dies



Type	Available sizes in mm	A	B
N46	7x10/7x15/7x20/9x13/9x19/11x17/11x23/13x18/13x22/13x27 15x20/15x24/15x27/17x22/17x26/19x26/21x27mm	46 mm	28,5 mm
N60	13x31/15x31/17x31/17x40/19x31/19x40/21x31/21x40mm	60 mm	32 mm

For different sizes please ask the manufacturer

► Tube notching tooling

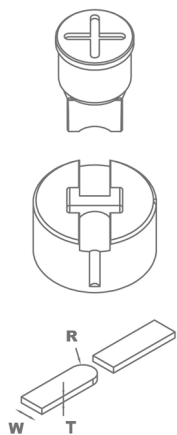


Reference	Available sizes in mm	Required fitting	
MAN28	Tube from 16 to 28mm	TAP 28	CAB 46
MAN40	Tube from 28,5 to 40mm	TAP 40	CAB 60
MAN50	Tube from 40,5 to 50mm	TAP 50	CAB 78

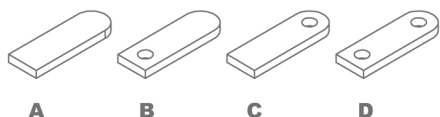
For different sizes please ask the manufacturer

Accessories for Horizontal press brake PP200

► Flat bar round end tooling R1



Reference	Model	Width size	Required fitting
MOR1-35A	A	From 20 to 35mm	TAP28 / TAP40
MOR1-35B	B	From 20 to 35mm	TAP28 / TAP40
MOR1-35C	C	From 20 to 35mm	TAP28 / TAP40
MOR1-35D	D	From 20 to 35mm	TAP28 / TAP40
MOR1-50A	A	From 40 to 50mm	TAP50 / TAP60 with ATAP
MOR1-50B	B	From 40 to 50mm	TAP50 / TAP60 with ATAP
MOR1-50C	C	From 40 to 50mm	TAP50 / TAP60 with ATAP
MOR1-50D	D	From 40 to 50mm	TAP50 / TAP60 with ATAP



For different sizes, please ask the manufacturer.

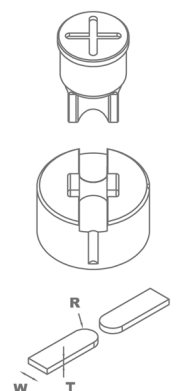
When placing order it must be specified the REFERENCE, MODEL, R (radius), W (flat bar width), T (flat bar thickness)

In models B, C and D specify diameter of the hole.

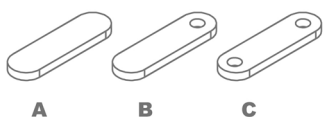
The ear shaped legth is always adjustable.

Production capacity: 450 to 600 parts per hour.

► Flat bar round end tooling R2



Reference	Model	Width size	Required fitting
MOR2-35A	A	From 20 to 35mm	TAP28 / TAP40
MOR2-35B	B	From 20 to 35mm	TAP28 / TAP40
MOR2-35C	C	From 20 to 35mm	TAP28 / TAP40
MOR2-50A	A	From 40 to 50mm	TAP50 / TAP60 with ATAP
MOR2-50B	B	From 40 to 50mm	TAP50 / TAP60 with ATAP
MOR2-50C	C	From 40 to 50mm	TAP50 / TAP60 with ATAP



For different sizes, please ask the manufacturer.

When placing order it must be specified the REFERENCE, MODEL, R (radius), W (flat bar width), T (flat bar thickness)

In models B and C specify hole diameter.

The ear shaped legth is always adjustable.

Production capacity: 450 to 600 parts per hour.

Accessories for Horizontal press brake PP200

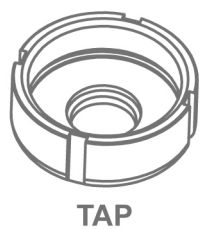
► Corner rounding tooling



Reference	Available sizes in mm	Required fitting	
MRE28	Radius from 3 to 16mm	TAP 28	CAB 46
MRE40	Radius from 16,5 to 26mm	TAP 40	CAB 60
MRE50	Radius from 26,5 to 32mm	TAP 50	CAB 78

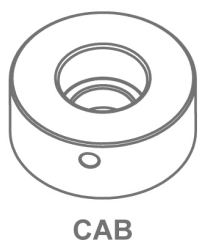
For different sizes please ask the manufacturer

► Fitting nuts for punches



Type	Fitting nuts for punches
TAP28	Fitting nuts for punches N28
TAP40	Fitting nuts for punches N40
TAP50	Fitting nuts for punches N50
TAP60	Fitting nuts for punches N60

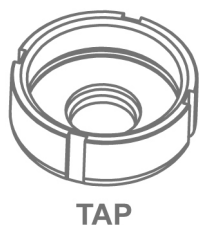
► Fitting for dies



Type	Fitting for dies
N46	Fitting for dies N46
N60	Fitting for dies N60
N78	Fitting for dies N78

Accessories for Hydraulic iron worker MX340

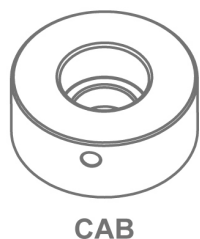
► Fitting nuts for punches MX340



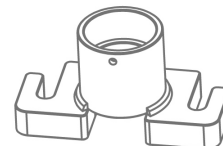
Type	Fitting nuts for punches
TAP28	Fitting nuts for punches N28 <i>Standard</i>
TAP40	Fitting nuts for punches N40
TAP50	Fitting nuts for punches N50
TAP60	Fitting nuts for punches N60
ATAP	Fitting part for TAP60



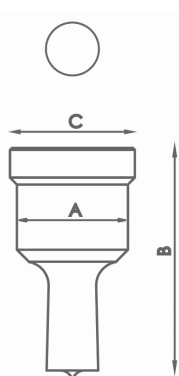
► Fitting parts for dies MX340



Type	Fitting for dies
N46	Fitting for dies N46 <i>Standard</i>
N60	Fitting for dies N60
N78	Fitting for dies N78
N100	Base holder for dies N100
N125	Base holder for dies N125



► Standard round punches MX340

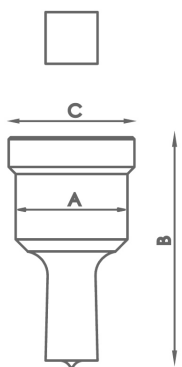


Type	Available sizes in mm Ø	A	B	C
N28	3/3'5/4/4'5/5/5'5/6/6'5/7/7'5/8/8'5 9mm up to 28mm from 0'5 in 0'5mm	28 mm	58 mm	31,5 mm
N40	29/30/31/32/33/34/35/36/37/38/39/40mm	40 mm	64 mm	43,5 mm
N50	41/42/43/44/45/46/47/48/49/50mm	50 mm	58 mm	54 mm
N60	52/54/56/58/60mm	60 mm	58 mm	64 mm
N75	62/64/66/68/70/72/74mm	75 mm	58 mm	79 mm
N100	76/78/80/82/84/86/88/90/92/94/96/98/100mm	100 mm	58 mm	104 mm

For different sizes, please ask the manufacturer.

Accessories for Hydraulic iron worker MX340

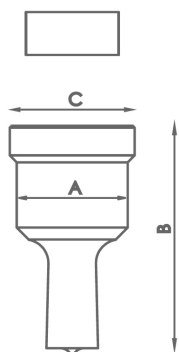
► Standard square punches MX340



Type	Available sizes in mm Ø	A	B	C
N28	4/5/6/7/8/9/10/11/12/13/14/15/16/17/18/19/20mm	28 mm	58 mm	31,5 mm
N40	21/22/24/26/28mm	40 mm	64 mm	43,5 mm
N50	31/33/35mm	50 mm	58 mm	54 mm
N75	40/44/48/53mm	75 mm	58 mm	79 mm
N100	58/64/70mm	100 mm	58 mm	104 mm

For different sizes, please ask the manufacturer.

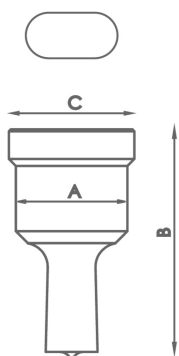
► Standard rectangular punches MX340



Type	Available sizes in mm Ø	A	B	C
N28	7x10/7x15/9x13/9x19/11x17/11x23 13x19/15x21mm	28 mm	58 mm	31,5 mm
N40	13x25/15x27/17x25/19x30/20x34mm	40 mm	64 mm	43,5 mm
N50	25x43mm	50 mm	58 mm	54 mm
N75	25x70mm	75 mm	58 mm	79 mm
N100	25x96mm	100 mm	58 mm	104 mm

For different sizes, please ask the manufacturer.

► Standard oval punches MX340

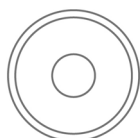
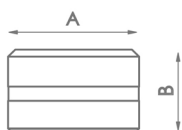


Type	Available sizes in mm Ø	A	B	C
N28	7x10/7x15/7x20/9x13/9x19/11x17/11x23/13x18 13x22/13x27/15x20/15x24/15x27/17x22/17x26 19x26/21x27mm	28 mm	58 mm	31,5 mm
N40	13x31/15x31/17x31/17x40/19x31 19x40/21x31/21x40mm	40 mm	64 mm	43,5 mm
N50	25x45/25x50mm	50 mm	58 mm	54 mm
N75	27x63/27x75mm	75 mm	58 mm	79 mm
N100	30x87/30x100mm	100 mm	58 mm	104 mm

For different sizes, please ask the manufacturer.

Accessories for Hydraulic iron worker MX340

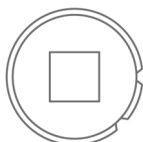
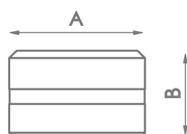
► Standard round dies MX340



Type	Available sizes in mm	A	B
N46	3/3,5/4/4,5/5/5,5/6/6,5/7/7,5/8/8,5 9mm up to 28mm from 0,5 in 0,5mm	46 mm	28,5 mm
N60	29/30/31/32/33/34/35/36/37/38/39/40mm	60 mm	32 mm
N78	41/42/43/44/45/46/47/48/49/50mm	78 mm	28,5 mm
N100	52/54/56/58/60/62/64/66/68/70/72/74mm	100 mm	28,5 mm
N125	76/78/80/82/84/86/88/90/92/94/96/98/100mm	125 mm	28,5 mm

For different sizes, please ask the manufacturers.

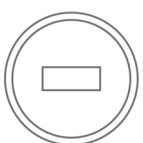
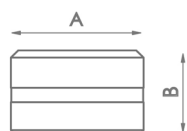
► Standard square dies MX340



Type	Available sizes in mm	A	B
N46	4/5/6/7/8/9/10/11/12/13/14/15/16/17/18/19/20mm	46 mm	28,5 mm
N60	21/22/24/26/28mm	60 mm	32 mm
N78	31/33/35mm	78 mm	28,5 mm
N100	40/44/48/53mm	100 mm	28,5 mm
N125	58/64/70mm	125 mm	28,5 mm

For different sizes, please ask the manufacturers.

► Standard rectangular dies MX340

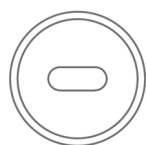


Type	Available sizes in mm	A	B
N46	7x10/7x15/9x13/9x19/11x17/11x23/13x19/13x25/ 15x21mm	46 mm	28,5 mm
N60	15x27/17x25/19x30/20x34mm	60 mm	32 mm
N78	25x43mm	78 mm	28,5 mm
N100	25x70mm	100 mm	28,5 mm
N125	25x96mm	125 mm	28,5 mm

For different sizes, please ask the manufacturers.

Accessories for Hydraulic iron worker MX340

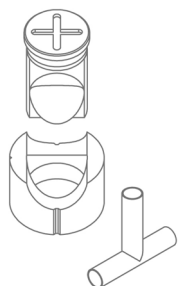
► Oval dies MX340



Type	Available sizes in mm	A	B
N46	7x10/7x15/7x20/9x13/9x19/11x17/11x23/13x18/13x22/13x27 15x20/15x24/15x27/17x22/17x26/19x26/21x27mm	46 mm	28,5 mm
N60	13x31/15x31/17x31/17x40/19x31/19x40/21x31/21x40mm	60 mm	32 mm
N78	25x45/25x50mm	78 mm	28,5 mm
N100	27x63/27x75mm	100 mm	28,5 mm
N125	30x87/30x100mm	125 mm	28,5 mm

For different sizes, please ask the manufacturers.

► Tube notching tooling MX340



Reference	Available sizes in mm	Required fitting	
MAN28	Tube from 16 to 28mm	TAP 28	CAB 46
MAN40	Tube from 28,5 to 40mm	TAP 40	CAB 60
MAN50	Tube from 40,5 to 50mm	TAP 50	CAB 78
MAN60	Tube from 50,5 to 60mm	TAP 60	

For different sizes, please ask the manufacturers.

► Corner rounding tooling MX340

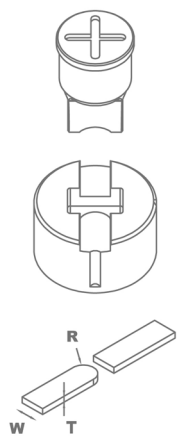


Reference	Available sizes in mm	Required fitting	
MRE28	Radius from 3 to 16mm	TAP 28	CAB 46
MRE40	Radius from 16,5 to 26mm	TAP 40	CAB 60
MRE50	Radius from 26,5 to 32mm	TAP 50	CAB 78

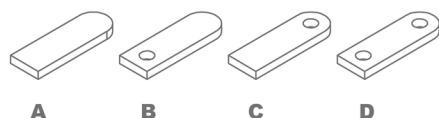
For different sizes, please ask the manufacturers.

Accessories for Hydraulic iron worker MX340

► Flat bar round end tooling R1



Reference	Model	Width size	Required fitting
MOR1-35A	A	From 20 to 35mm	TAP28 / TAP40
MOR1-35B	B	From 20 to 35mm	TAP28 / TAP40
MOR1-35C	C	From 20 to 35mm	TAP28 / TAP40
MOR1-35D	D	From 20 to 35mm	TAP28 / TAP40
MOR1-50A	A	From 40 to 50mm	TAP50 / TAP60 with ATAP
MOR1-50B	B	From 40 to 50mm	TAP50 / TAP60 with ATAP
MOR1-50C	C	From 40 to 50mm	TAP50 / TAP60 with ATAP
MOR1-50D	D	From 40 to 50mm	TAP50 / TAP60 with ATAP



For different sizes, please ask the manufacturer.

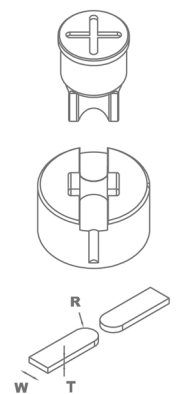
When placing order it must be specified the REFERENCE, MODEL, R (radius), W (flat bar width), T (flat bar thickness)

In models B, C and D specify diameter of the hole.

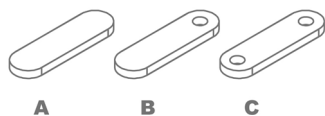
The ear shaped length is always adjustable.

Production capacity: 450 to 600 parts per hour.

► Flat bar round end tooling R2



Reference	Model	Width size	Required fitting
MOR2-35A	A	From 20 to 35mm	TAP28 / TAP40
MOR2-35B	B	From 20 to 35mm	TAP28 / TAP40
MOR2-35C	C	From 20 to 35mm	TAP28 / TAP40
MOR2-50A	A	From 40 to 50mm	TAP50 / TAP60 with ATAP
MOR2-50B	B	From 40 to 50mm	TAP50 / TAP60 with ATAP
MOR2-50C	C	From 40 to 50mm	TAP50 / TAP60 with ATAP



For different sizes, please ask the manufacturer.

When placing order it must be specified the REFERENCE, MODEL, R (radius), W (flat bar width), T (flat bar thickness)

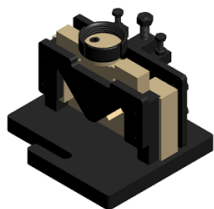
In models B and C specify hole diameter.

The ear shaped length is always adjustable.

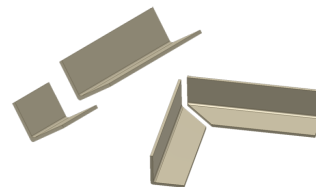
Production capacity: 450 to 600 parts per hour.

Accessories for Hydraulic iron worker MX340

► Angle cutting tooling. MX340

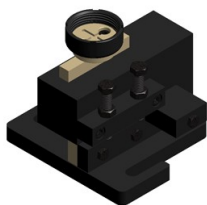


Reference: 140-02-01-00001
Angle cutting tooling, from 90° up to 45°.

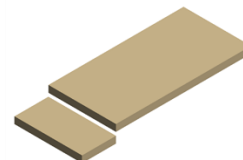


Units per machine	Max. Capacity for straight cut	Max. Cutting capacity for miter	Weight
1	60x60mm	50x50mm	32 Kg

► Flat bar cutting tooling. MX340



Reference: 140-02-01-00002
Tooling for cutting sheet or flat bars from 0.8mm up to 10mm thickness.

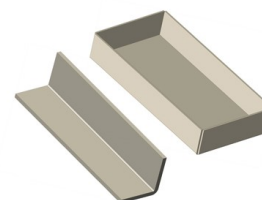


Units per machine	Max. Cutting capacity	Weight
1	100x10mm	28 Kg

► Folding tooling 170mm. MX340

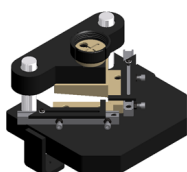


Reference: 140-02-01-00004
Tooling for folding sheet and flat bar up to 170mm.
88° punch. Dies with V for 56mm and V for 26m.

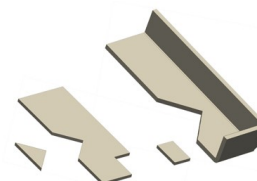


Units per machine	Max folding length	Max folding thickness	Weight
1	170mm	8 to 12mm	12 Kg

► Stripping tooling to 90° adjustable 100x100 MX340



Reference: 140-02-01-00005
Stripping tooling for angle etc. Adjustable up to 100x100mm to 90° fijos.



Units per machine	Max. Cutting capacity	Weight
1	100x100x4	21 Kg

Accessories for Hydraulic iron worker MX340

▶ Arrow tooling for metal sheet MX340



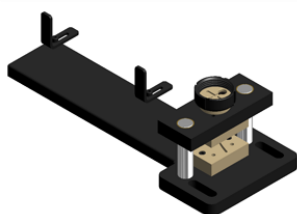
Reference: 140-02-01-00006

Tooling for punching metal sheet in arrow shapes for fences.



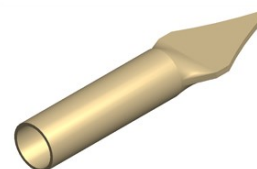
Units per machine	Max. Sheet Thickness	Weight
1	3mm	21 Kg

▶ Arrow tooling for pipes MX340



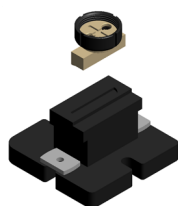
Reference: 140-02-01-00007

Tooling to flatten and cut arrow shaped pipes end. Suitable for different diameters.



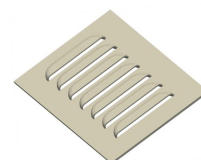
Units per machine	Pipe max. Diameter	Min. Pipe diameter	Weight
1	30x2mm	10x2mm	19 Kg

▶ Ventilation grip tooling. MX340



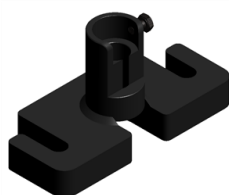
Reference: 140-02-01-00010

Tooling to make ventilation grips in metal sheet. Adjustable amount of punchings. They are to made one by one.



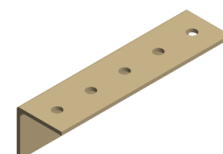
Units per machine	Punchings sizes	Max. thickness	Weight
1	100x20mm	2mm	20Kg

▶ Angle & U profile punching tooling MX340



Reference: 140-02-01-00031

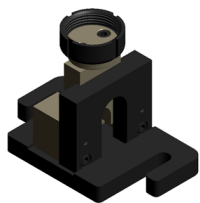
Base holder for angle punching. Suitable for punches and dies of different diameters, exchangeables.



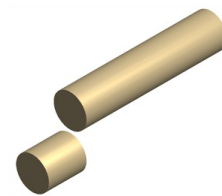
Units per machine	Max. Hole diameter	Min. Hole diameter	Weight
1	28mm	2mm	7 Kg

Accessories for Hydraulic iron worker MX340

► Round bar cutting tooling. MX340



Reference: 140-02-01-00035
Tooling for cutting round bar from 3mm up to 35mm.

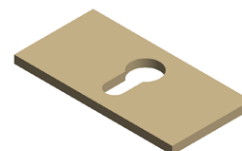


Units per machine	Max. Cutting diameter	Min. Cutting diameter	Weight
1	35mm	3mm	15 Kg

► Locks punch and die MX340

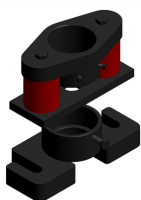


Reference: 140-02-01-00036
Set for making the lock hole in metal sheet.
Necessary complements: CAB60 and TAP40

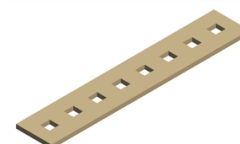


Parts per set	Max. Thickness	Weight
2	6mm	1 Kg

► Flattening tooling MX340

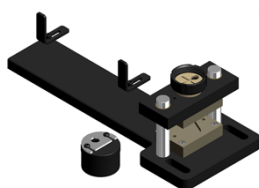


Reference: 140-02-01-00039
It's an extractor which acts as the flat bar holder at the punching time to prevent the flat bar from deformation while being punched.

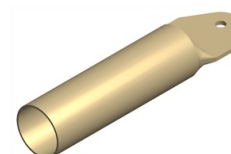


Parts per tooling	Flat Bar Max Thickness	Weight
3	15mm	15 Kg

► Fence post end tooling MX340



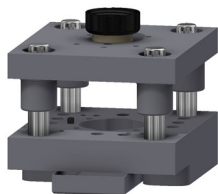
Reference: 140-02-01-00040
Tooling to flatten and punch the pipe for fences. It admits different pipe diameters. Exchangeable hole size.



Parts per tooling	Max. Pipe diameter	Min. Pipe diameter	Hole diameter	Weight
2	50mm	10mm	Intercambiable	23 Kg

Accessories for Hydraulic iron worker MX340

► Set of cutting and shaping die holders for MX340

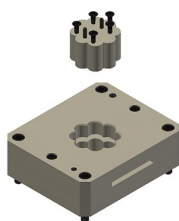


Reference: 140-02-01-00042

Set of die holders to be adapted cutting and shaping tooling for decorative flower elements.

Pieces per set	Weight
2	58 Kg

► Flower cutting die D65 8 petals MX340



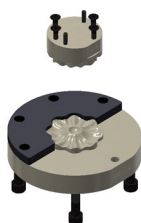
Reference: 140-02-01-00043

Die for cutting 8 petals flower shaped metal sheet, D65mm. For its use, it is required the die holder for cutting and shaping MX3400. Ref. 140-02-01-00042
For any other different designs, ask the manufacturer



Pieces per set	Thickness	Weight
2	1 - 1,5 - 2 - 3mm	10,5 Kg

► Flower inlaying tooling D65 8 petals MX340



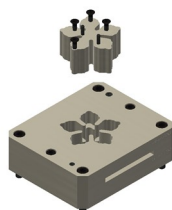
Reference: 140-02-01-00044

Die for molding 8 petals flower shaped metal sheet, D65mm. For its use, it is required the die holder for cutting and shaping MX3400. Ref. 140-02-01-00042 and cutting die Ref. 140-02-01-00043
For any other different designs, ask the manufacturer



Pieces per set	Thickness	Weight
2	1 - 1,5 - 2 - 3mm	4,9 Kg

► Flower cutting die D85 5 petals MX340



Reference: 140-02-01-00045

Die for cutting flower shaped metal sheet, 5 petals with diameter 85mm. For its use, it is required the die holder for cutting and shaping MX340. Ref. 140-02-01-00042
For any other different designs, ask the manufacturer



Pieces per set	Thickness	Weight
2	1 - 1,5 - 2mm	10,4 Kg

Accessories for Hydraulic iron worker MX340

► Flower inlaying tool D85 5 petals MX340

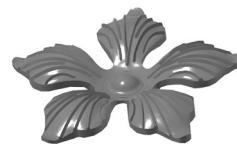


Reference: 140-02-01-00046

Tooling for molding 5 petal flower shaped metal sheet, diameter 85mm.

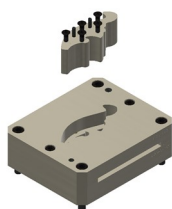
For its use, it is required the die holder for cutting and shaping MX340. Ref. 140-02-01-00042 and cutting die Ref. 140-02-01-00045

For any other different designs, ask the manufacturer



Pieces per set	Thickness	Weight
2	1 - 1,5 - 2mm	6,2 Kg

► Leaf cutting die 108X42 MX340



Reference: 140-02-01-00047

Tooling for cutting leaf shaped, 108x42mm

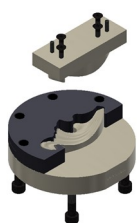
For its use, it is required the die holder for cutting and shaping MX340. Ref. 140-02-01-00042

For any other different designs, ask the manufacturer



Pieces per set	Thickness	Weight
2	1 - 1,5 - 2 - 3mm	10,2 Kg

► Flower inlaying tool 108X42 left MX340

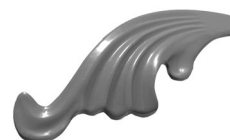


Reference: 140-02-01-00048

Tooling for molding 108x42mm leaf shaped metal sheet, left.

For its use, it is required the die holder for cutting and shaping MX340. Ref. 140-02-01-00042 and cutting die Ref. 140-02-01-00047

For any other different designs, ask the manufacturer



Pieces per set	Thickness	Weight
2	1 - 1,5 - 2 - 3mm	6,2 Kg

► Leaf inlaying tool 108X42 right MX340

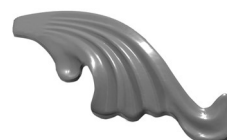


Reference: 140-02-01-00049

Tooling for molding 108x42mm leaf shaped metal sheet, right..

For its use, it is required the die holder for cutting and shaping MX340. Ref. 140-02-01-00042 and cutting die Ref. 140-02-01-00047

For any other different designs, ask the manufacturer



Pieces per set	Thickness	Weight
2	1 - 1,5 - 2 - 3mm	6,2 Kg

Accessories for Hydraulic iron worker MX340

► Bifoliate leaf cutting die MX340



Reference: 140-02-01-00051

Die for cutting bifoliate leaf shaped 70x65mm.
For its use, it is required the die holder for cutting and shaping MX340. Ref. 140-02-01-00042
For any other different designs, ask the manufacturer



Pieces per set	Thickness	Weight
2	1 - 1,5 - 2mm	10,5 Kg

► Bifoliate leaf inlaying tool right MX340



Reference: 140-02-01-00053

Tooling for molding bifoliate leaf 70x65mm, right.
For its use, it is required the die holder for cutting and shaping MX340. Ref. 140-02-01-00042 and cutting die Ref. 140-02-01-00051
For any other different designs, ask the manufacturer



Pieces per set	Thickness	Weight
2	1 - 1,5 - 2mm	17,3 Kg

► Bifoliate leaf inlaying tool right left MX340



Reference: 140-02-01-00054

Tooling for molding bifoliate leaf 70x65mm, left.
For its use, it is required the die holder for cutting and shaping MX340. Ref. 140-02-01-00042 and cutting die Ref. 140-02-01-00051
For any other different designs, ask the manufacturer



Pieces per set	Thickness	Weight
2	1 - 1,5 - 2mm	17,3 Kg

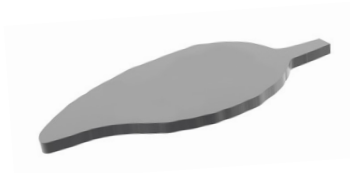
Accessories for Hydraulic iron worker MX340

► Serrated-edges leaf cutting die MX340



Reference: 140-02-01-00052

Die for cutting serrated-edges leaf 115x50mm.
For its use, it is required the die holder for cutting and shaping MX340. Ref. 140-02-01-00042
For any other different designs, ask the manufacturer



Pieces per set	Thickness	Weight
2	1 - 1,5 - 2mm	10,2 Kg

► Serrated-edges leaf inlaying tool MX340



Reference: 140-02-01-00055

Tooling for molding serrated-edges leaf 115x50mm.
For its use, it is required the die holder for cutting and shaping MX340. Ref. 140-02-01-00042 and cutting die Ref. 140-02-01-00052
For any other different designs, ask the manufacturer

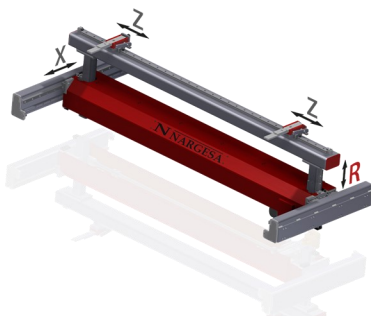


Pieces per set	Thickness	Weight
2	1 - 1,5 - 2mm	16,4 Kg

Accessories for Press brakes

► R axis

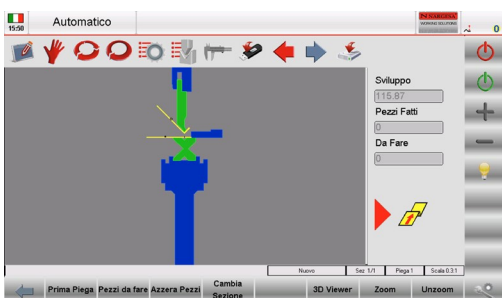
The R Axis is not supplied as standard with the machine; the client may include it when purchasing the machine or add it later. This Axis has a Canopen communication system that enables it to be installed in a rapid and simple manner to the machine. The operator needs only to connect it to the motor of the X axis and Nargesa's technicians will configure the CNC remotely.



Reference	140-05-OP-00001
High speed measurement search	130 mm/seg
Servo motor	1 Nm a 5000 rpm
R axis limit	150 mm
Mechanical precision	0,05 mm

► Graphs and folding calculation on CNC

The user can incorporate the **optional software** on the press brake CNC and buy it later on. There is also the possibility of carrying out the remote software installation, by our Nargesa Technicians.

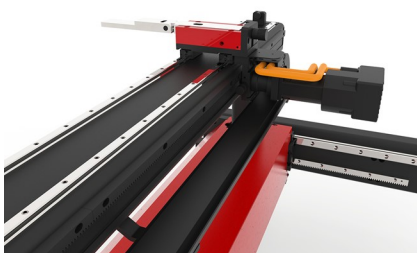


Reference	140-05-OP-00002
------------------	------------------------

► Z1-Z2 axis

The Z1-Z2 axis enables us to optimize the set up time of the machine. The CNC optimizes the position of gauges Z1 and Z2 according to the dimensions of the piece and the position of the tools.

The parallelism of the gauge needles with the folding unit of the press brake fits automatically by means of micrometers to guarantee the maximum accuracy.



Reference	140-05-OP-00004
High search speed of size	400 mm/seg
Linear guides for recirculation of high precision balls	
Servo motors	1 Nm a 5000 rpm
Stroke axis Z1, Z2	2600 mm
Mechanical precision	0,05 mm

* In case of choosing this option the machine will be delivered with the ESA 640 CNC,

* This option is only available if you have chosen the following optional accessories: R-axis and Graphics and CNC bending calculation

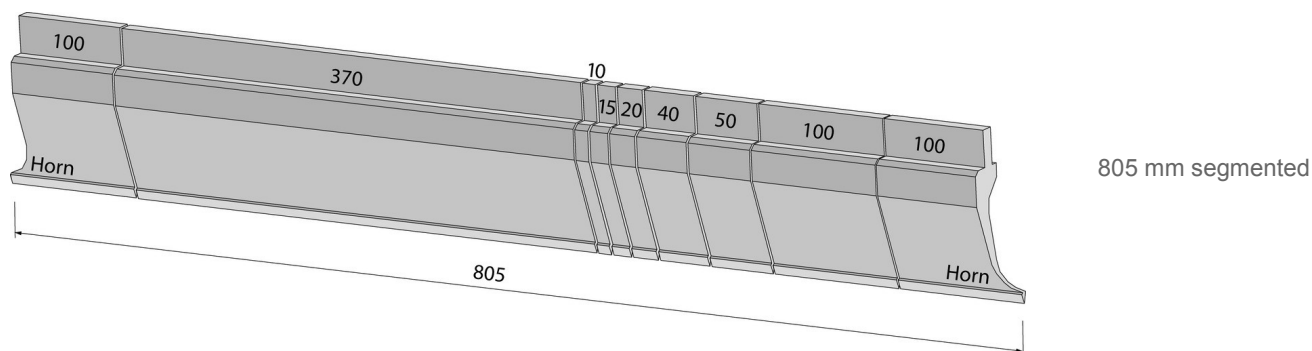
Accessories for Press brakes

► Punches

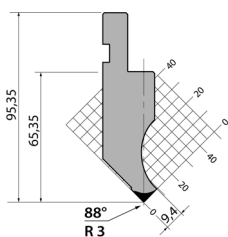
All accessories for Nargesa Pres Brakes are manufactured according to international standards. Therefore, guaranteeing high resilience and tensile strength.

For different sizes, please ask the manufacturer.

Materia Type	Mechanical resistance of the material and the tool body	Hardness of the material and the tool body	Hardness of the operating surfaces after induction hardening
42CrM04	900 - 1150 N/mm ²	29.1 - 36.9 HRC	54 - 60 HRC
C45	560 - 710 N/mm ²	12 - 15.5 HRC	54 - 60 HRC

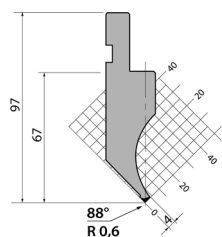


P.95.88.R3



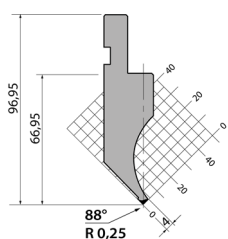
Length
835 mm.
415 mm.
795 mm. Seg.
805 mm. Seg.

P.97.88.R06



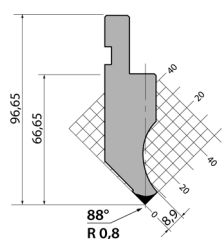
Length
835 mm.
415 mm.
795 mm. Seg.
805 mm. Seg.
900 mm.

P.97.88.R025



Length
835 mm.
415 mm.
795 mm. Seg.
805 mm. Seg.
900 mm.

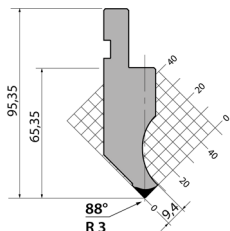
P.97.88.R08



Length
835 mm.
415 mm.
795 mm. Seg.
805 mm. Seg.
900 mm.

Accessories for Press brakes

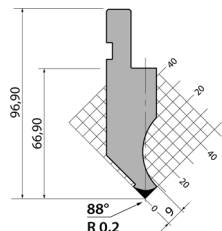
PK.97.88.R025



Length

- 835 mm.
- 415 mm.
- 795 mm. Seg.
- 805 mm. Seg.
- 900 mm.

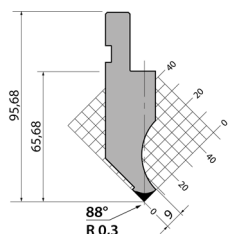
00402



Length

- 835 mm.
- 415 mm.
- 795 mm. Seg.
- 800 mm. Seg.

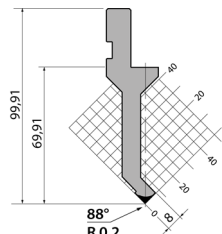
00430



Length

- 835 mm.
- 415 mm.
- 795 mm. Seg.
- 800 mm. Seg.

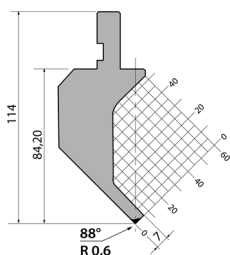
20000



Length

- 835 mm.
- 415 mm.
- 795 mm. Seg.
- 800 mm. Seg.

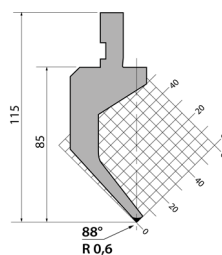
P.114.88.R06



Length

- 835 mm.
- 415 mm.
- 795 mm. Seg.
- 805 mm. Seg.

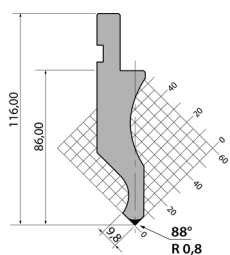
P.115.88.R06



Length

- 835 mm.
- 415 mm.
- 795 mm. Seg.
- 805 mm. Seg.

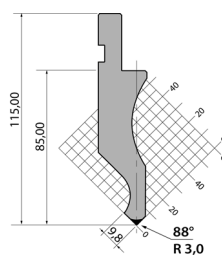
D.116.88.R08



Length

- 835 mm.
- 415 mm.
- 795 mm. Seg.
- 805 mm. Seg.

D.116.88.R3

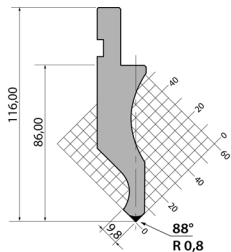


Length

- 835 mm.
- 415 mm.
- 795 mm. Seg.
- 805 mm. Seg.

Accessories for Press brakes

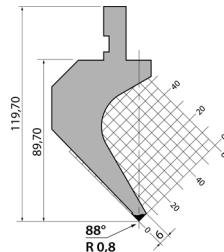
P.116.88.R08



Length

835 mm.
415 mm.
795 mm. Seg.
805 mm. Seg.

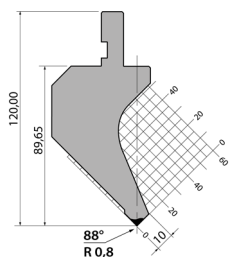
PS.120.88.R08



Length

835 mm.
415 mm.
795 mm. Seg.
805 mm. Seg.

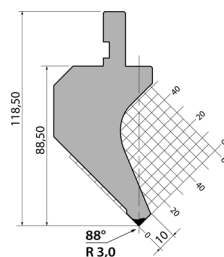
P.120.88.R08



Length

835 mm.
415 mm.
795 mm. Seg.
805 mm. Seg.

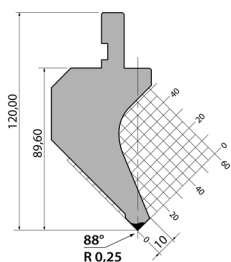
P.120.88.R3



Length

835 mm.
415 mm.
795 mm. Seg.
805 mm. Seg.

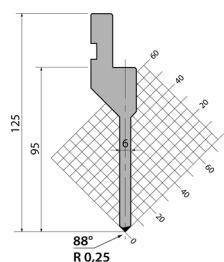
PK.120.88.R025



Length

835 mm.
415 mm.
795 mm. Seg.
805 mm. Seg.

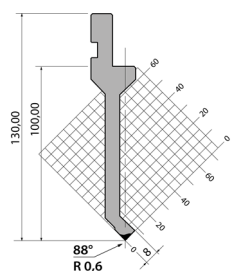
P.125.88.R025



Length

835 mm.
415 mm.
795 mm. Seg.
805 mm. Seg.

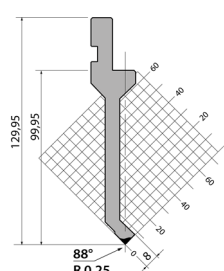
P.130.88.R06



Length

835 mm.
415 mm.
795 mm. Seg.
805 mm. Seg.
900 mm.

PK.130.88.R025

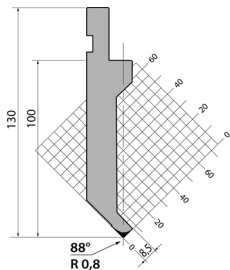


Length

835 mm.
415 mm.
795 mm. Seg.
805 mm. Seg.
900 mm.

Accessories for Press brakes

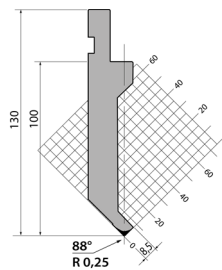
P.130.88.R08



Length

835 mm.
415 mm.
795 mm. Seg.
805 mm. Seg.

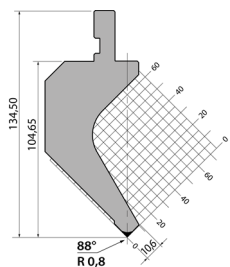
P.130.88.R025



Length

835 mm.
415 mm.
795 mm. Seg.
805 mm. Seg.

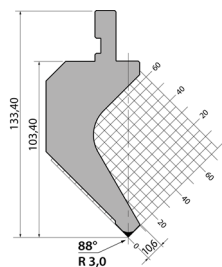
P.135.88.R08



Length

835 mm.
415 mm.
795 mm. Seg.
805 mm. Seg.

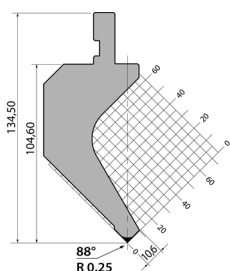
P.135.88.R3



Length

835 mm.
415 mm.
795 mm. Seg.
805 mm. Seg.

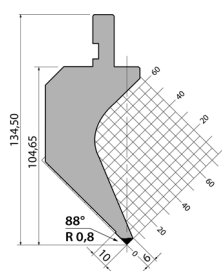
PK.135.88.R025



Length

835 mm.
415 mm.
795 mm. Seg.
805 mm. Seg.

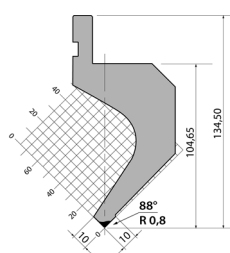
PS.135.88.R08



Length

835 mm.
415 mm.
795 mm. Seg.
805 mm. Seg.

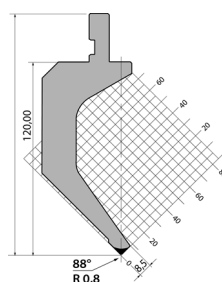
PR.135.88.R08



Length

835 mm.
415 mm.
795 mm. Seg.
805 mm. Seg.

P.150.88.R08

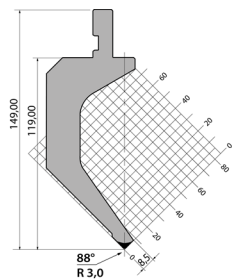


Length

835 mm.
415 mm.
795 mm. Seg.
805 mm. Seg.
900 mm.

Accessories for Press brakes

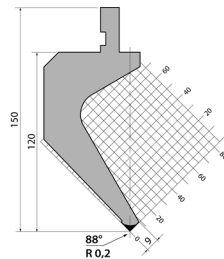
P.150.88.R3



Length

- 835 mm.
- 415 mm.
- 795 mm. Seg.
- 805 mm. Seg.
- 900 mm.

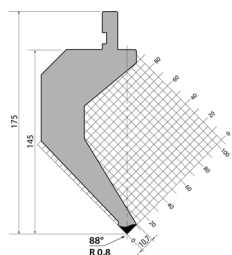
04702



Length

- 835 mm.
- 415 mm.
- 795 mm. Seg.
- 800 mm. Seg.

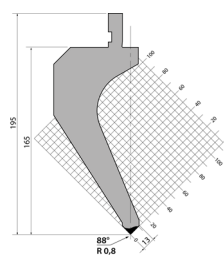
P.175.88.R08



Length

- 835 mm.
- 415 mm.
- 795 mm. Seg.
- 805 mm. Seg.

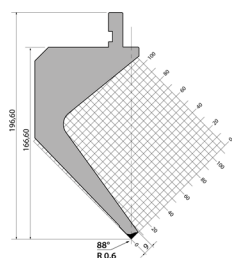
P.195.88.R08



Length

- 835 mm.
- 415 mm.
- 795 mm. Seg.
- 805 mm. Seg.

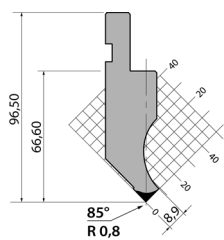
P.196.88.R06



Length

- 835 mm.
- 415 mm.
- 795 mm. Seg.
- 805 mm. Seg.
- 900 mm.

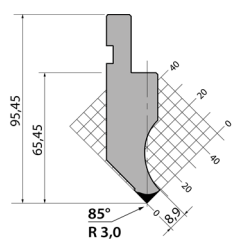
P.97.85.R08



Length

- 835 mm.
- 415 mm.
- 795 mm. Seg.
- 805 mm. Seg.

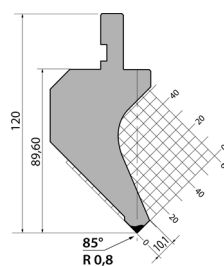
PK.95.85.R3



Length

- 835 mm.
- 415 mm.
- 795 mm. Seg.
- 805 mm. Seg.

PK.120.85.R08

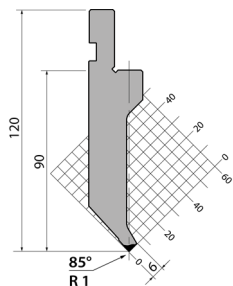


Length

- 835 mm.
- 415 mm.
- 795 mm. Seg.
- 805 mm. Seg.

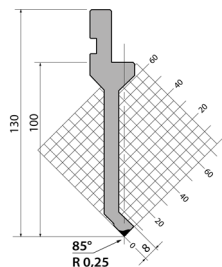
Accessories for Press brakes

P.120.85.R1



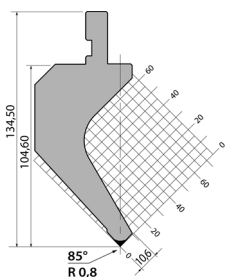
Length
835 mm.
415 mm.
795 mm. Seg.
805 mm. Seg.

P.130.85.R025



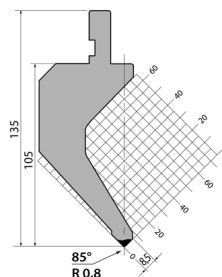
Length
835 mm.
415 mm.
795 mm. Seg.
805 mm. Seg.

PK.135.85.R08



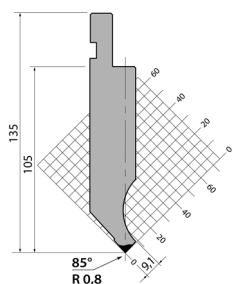
Length
835 mm.
415 mm.
795 mm. Seg.
805 mm. Seg.

P.135.85.R08



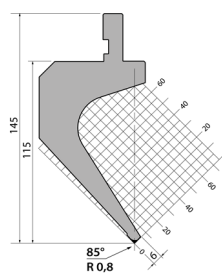
Length
835 mm.
415 mm.
795 mm. Seg.
805 mm. Seg.

PS.135.85.R08



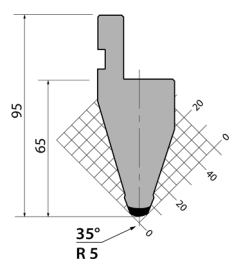
Length
835 mm.
415 mm.
795 mm. Seg.
805 mm. Seg.

P.145.85.R08



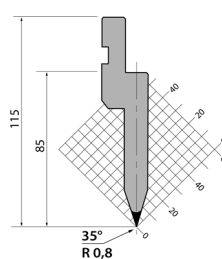
Length
835 mm.
415 mm.
795 mm. Seg.
805 mm. Seg.

P.95.35.R5



Length
835 mm.
415 mm.
795 mm. Seg.
805 mm. Seg.

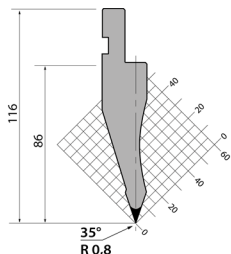
PU.85.35.R08



Length
835 mm.
415 mm.
795 mm. Seg.
805 mm. Seg.

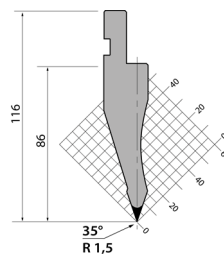
Accessories for Press brakes

P.116.35.R08



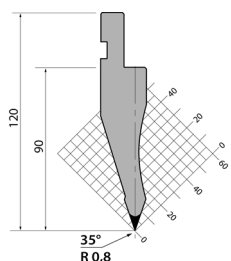
Length
835 mm.
415 mm.
795 mm. Seg.
805 mm. Seg.

P.116.35.R15



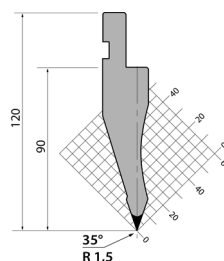
Length
835 mm.
415 mm.
795 mm. Seg.
805 mm. Seg.

P.120.35.R08



Length
835 mm.
415 mm.
795 mm. Seg.
805 mm. Seg.

P.120.35.R15



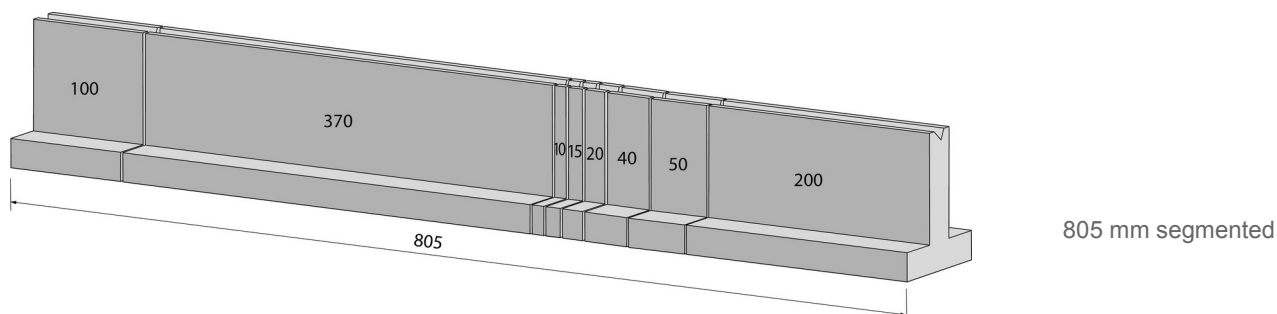
Length
835 mm.
415 mm.
795 mm. Seg.
805 mm. Seg.

Accessories for Press brakes

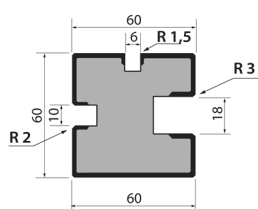
► Dies

For different sizes, please ask the manufacturer.

Materia Type	Mechanical resistance of the material and the tool body	Hardness of the material and the tool body	Hardness of the operating surfaces after induction hardening
42CrM04	900 - 1150 N/mm ²	29.1 - 36.9 HRC	54 - 60 HRC
C45	560 - 710 N/mm ²	12 - 15.5 HRC	54 - 60 HRC

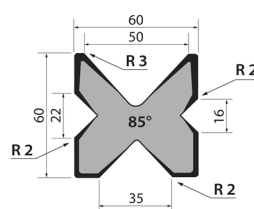


M.360.R



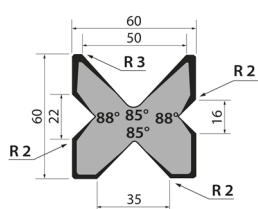
Length
835 mm.
415 mm.
795 mm. Seg.
805 mm. Seg.

M.460.R



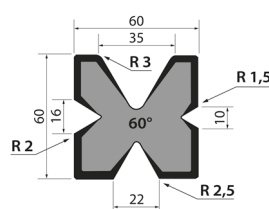
Length
835 mm.
415 mm.
795 mm. Seg.
805 mm. Seg.

M.460



Length
835 mm.
415 mm.
795 mm. Seg.
805 mm. Seg.

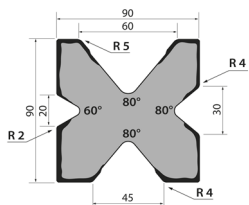
M.460.60



Length
835 mm.
415 mm.
795 mm. Seg.
805 mm. Seg.

Accessories for Press brakes

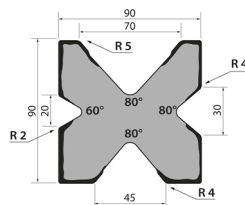
M.490



Length

835 mm.
415 mm.
795 mm. Seg.
805 mm. Seg.

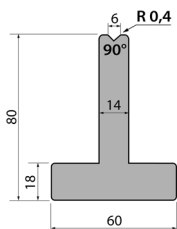
M.490.70



Length

835 mm.
415 mm.
795 mm. Seg.
805 mm. Seg.

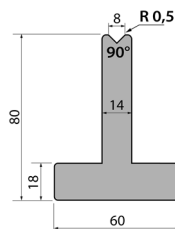
T80.06.90



Length

835 mm.
415 mm.
795 mm. Seg.
805 mm. Seg.
900 mm.

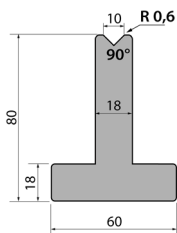
T80.08.90



Length

835 mm.
415 mm.
795 mm. Seg.
805 mm. Seg.
900 mm.

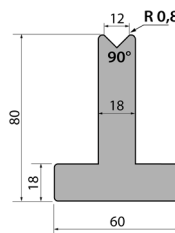
T80.10.90



Length

835 mm.
415 mm.
795 mm. Seg.
805 mm. Seg.

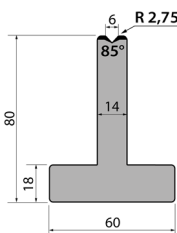
T80.12.90



Length

835 mm.
415 mm.
795 mm. Seg.
805 mm. Seg.

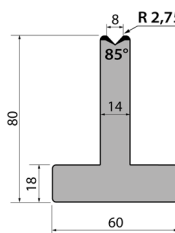
T80.06.85



Length

835 mm.
415 mm.
795 mm. Seg.
805 mm. Seg.

T80.08.85

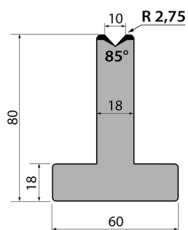


Length

835 mm.
415 mm.
795 mm. Seg.
805 mm. Seg.

Accessories for Press brakes

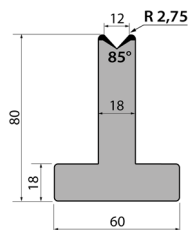
T80.10.85



Length

835 mm.
415 mm.
795 mm. Seg.
805 mm. Seg.

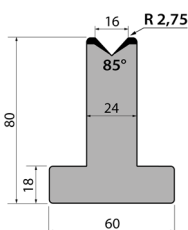
T80.12.85



Length

835 mm.
415 mm.
795 mm. Seg.
805 mm. Seg.

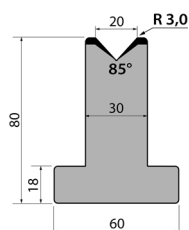
T80.16.85



Length

835 mm.
415 mm.
795 mm. Seg.
805 mm. Seg.

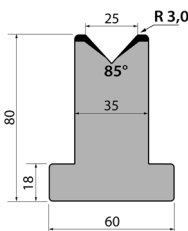
T80.20.85



Length

835 mm.
415 mm.
795 mm. Seg.
805 mm. Seg.

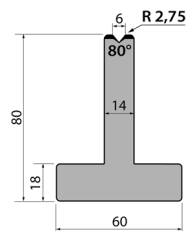
T80.25.85



Length

835 mm.
415 mm.
795 mm. Seg.
805 mm. Seg.

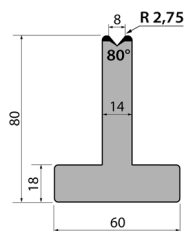
T80.06.80



Length

835 mm.
415 mm.
795 mm. Seg.
805 mm. Seg.

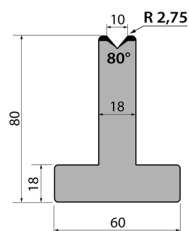
T80.08.80



Length

835 mm.
415 mm.
795 mm. Seg.
805 mm. Seg.

T80.10.80

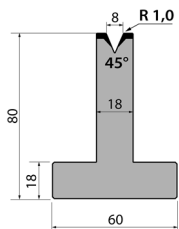


Length

835 mm.
415 mm.
795 mm. Seg.
805 mm. Seg.

Accessories for Press brakes

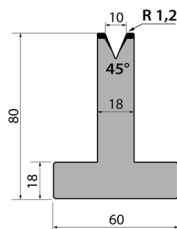
T80.08.45



Length

835 mm.
415 mm.
795 mm. Seg.
805 mm. Seg.

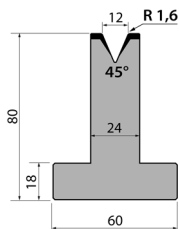
T80.10.45



Length

835 mm.
415 mm.
795 mm. Seg.
805 mm. Seg.

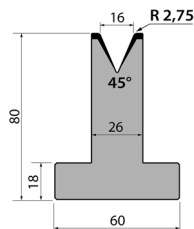
T80.12.45



Length

835 mm.
415 mm.
795 mm. Seg.
805 mm. Seg.

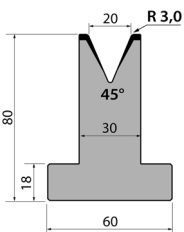
T80.16.45



Length

835 mm.
415 mm.
795 mm. Seg.
805 mm. Seg.

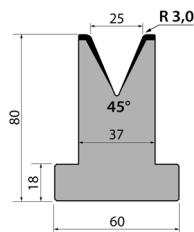
T80.20.45



Length

835 mm.
415 mm.
795 mm. Seg.
805 mm. Seg.

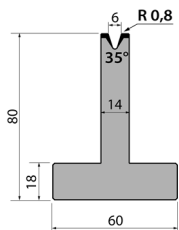
T80.25.45



Length

835 mm.
415 mm.
795 mm. Seg.
805 mm. Seg.

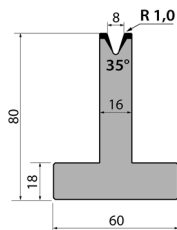
T80.06.35



Length

835 mm.
415 mm.
795 mm. Seg.
805 mm. Seg.

T80.08.35

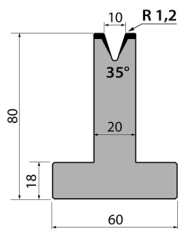


Length

835 mm.
415 mm.
795 mm. Seg.
805 mm. Seg.

Accessories for Press brakes

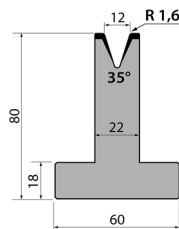
T80.10.35



Length

835 mm.
415 mm.
795 mm. Seg.
805 mm. Seg.

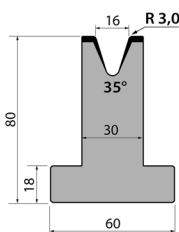
T80.12.35



Length

835 mm.
415 mm.
795 mm. Seg.
805 mm. Seg.

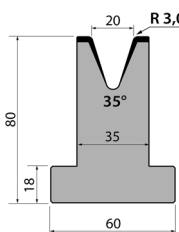
T80.16.35



Length

835 mm.
415 mm.
795 mm. Seg.
805 mm. Seg.

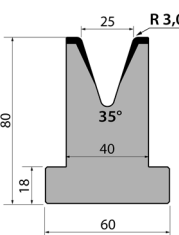
T80.20.35



Length

835 mm.
415 mm.
795 mm. Seg.
805 mm. Seg.

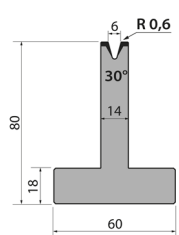
T80.25.35



Length

835 mm.
415 mm.
795 mm. Seg.
805 mm. Seg.

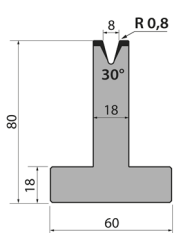
T80.06.30



Length

835 mm.
415 mm.
795 mm. Seg.
805 mm. Seg.

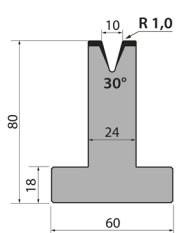
T80.08.30



Length

835 mm.
415 mm.
795 mm. Seg.
805 mm. Seg.

T80.10.30

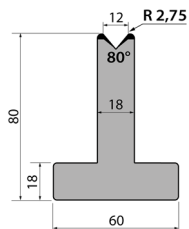


Length

835 mm.
415 mm.
795 mm. Seg.
805 mm. Seg.

Accessories for Press brakes

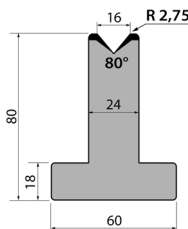
T80.12.80



Length

- _____ 835 mm.
- _____ 415 mm.
- _____ 795 mm. Seg.
- _____ 805 mm. Seg.

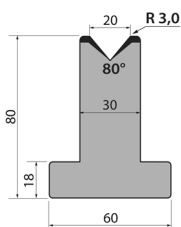
T80.16.80



Length

- _____ 835 mm.
- _____ 415 mm.
- _____ 795 mm. Seg.
- _____ 805 mm. Seg.

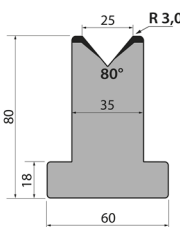
T80.20.80



Length

- _____ 835 mm.
- _____ 415 mm.
- _____ 795 mm. Seg.
- _____ 805 mm. Seg.

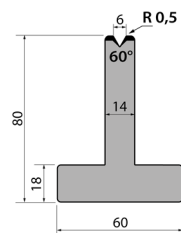
T80.25.80



Length

- _____ 835 mm.
- _____ 415 mm.
- _____ 795 mm. Seg.
- _____ 805 mm. Seg.

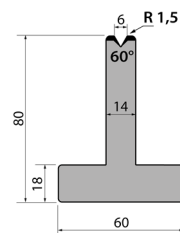
T80.06.60



Length

- _____ 835 mm.
- _____ 415 mm.
- _____ 795 mm. Seg.
- _____ 805 mm. Seg.

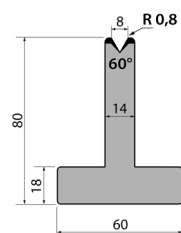
TR80.06.60



Length

- _____ 835 mm.
- _____ 415 mm.
- _____ 795 mm. Seg.
- _____ 805 mm. Seg.

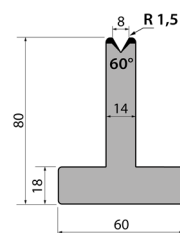
T80.08.60



Length

- _____ 835 mm.
- _____ 415 mm.
- _____ 795 mm. Seg.
- _____ 805 mm. Seg.

TR80.08.60

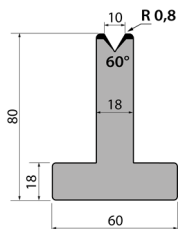


Length

- _____ 835 mm.
- _____ 415 mm.
- _____ 795 mm. Seg.
- _____ 805 mm. Seg.

Accessories for Press brakes

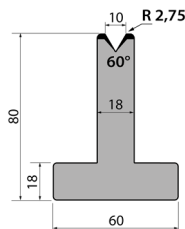
T80.10.60



Length

835 mm.
415 mm.
795 mm. Seg.
805 mm. Seg.

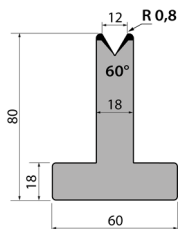
TR80.10.60



Length

835 mm.
415 mm.
795 mm. Seg.
805 mm. Seg.

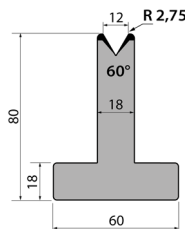
T80.12.60



Length

835 mm.
415 mm.
795 mm. Seg.
805 mm. Seg.

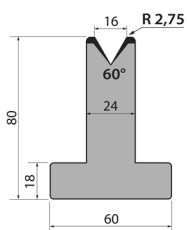
TR80.12.60



Length

835 mm.
415 mm.
795 mm. Seg.
805 mm. Seg.

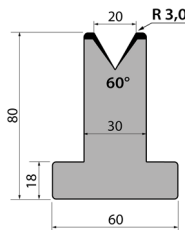
T80.16.60



Length

835 mm.
415 mm.
795 mm. Seg.
805 mm. Seg.

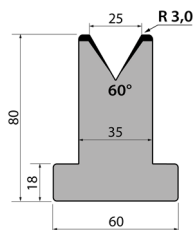
T80.20.60



Length

835 mm.
415 mm.
795 mm. Seg.
805 mm. Seg.

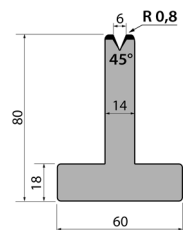
T80.25.60



Length

835 mm.
415 mm.
795 mm. Seg.
805 mm. Seg.

T80.06.45

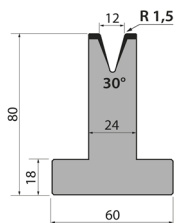


Length

835 mm.
415 mm.
795 mm. Seg.
805 mm. Seg.

Accessories for Press brakes

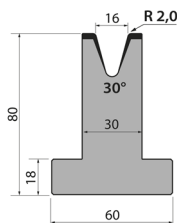
T80.12.30



Length

835 mm.
415 mm.
795 mm. Seg.
805 mm. Seg.

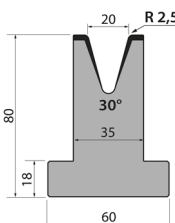
T80.16.30



Length

835 mm.
415 mm.
795 mm. Seg.
805 mm. Seg.

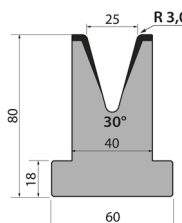
T80.20.30



Length

835 mm.
415 mm.
795 mm. Seg.
805 mm. Seg.

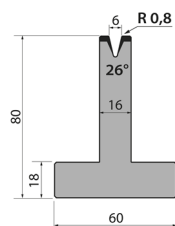
T80.25.30



Length

835 mm.
415 mm.
795 mm. Seg.
805 mm. Seg.

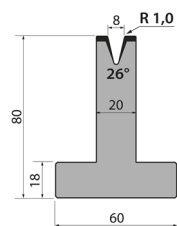
T80.06.26



Length

835 mm.
415 mm.
795 mm. Seg.
805 mm. Seg.

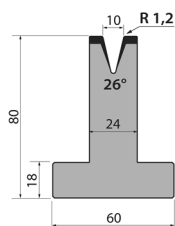
T80.08.26



Length

835 mm.
415 mm.
795 mm. Seg.
805 mm. Seg.

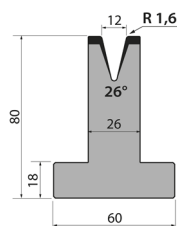
T80.10.26



Length

835 mm.
415 mm.
795 mm. Seg.
805 mm. Seg.

T80.12.26

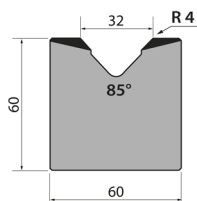


Length

835 mm.
415 mm.
795 mm. Seg.
805 mm. Seg.

Accessories for Press brakes

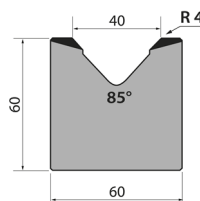
M60.85.32



Length

835 mm.
415 mm.
795 mm. Seg.
805 mm. Seg.

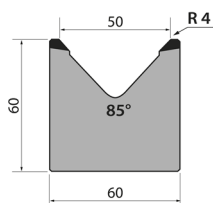
M60.85.40



Length

835 mm.
415 mm.
795 mm. Seg.
805 mm. Seg.

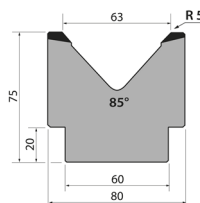
M60.85.50



Length

835 mm.
415 mm.
795 mm. Seg.
805 mm. Seg.

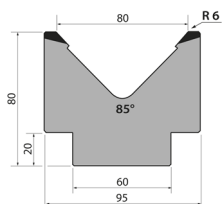
M75.85.63



Length

835 mm.
415 mm.
795 mm. Seg.
805 mm. Seg.

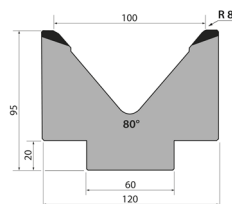
M80.85.80



Length

835 mm.
415 mm.
795 mm. Seg.
805 mm. Seg.

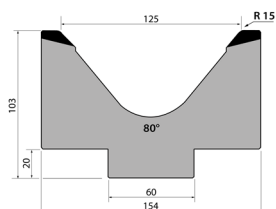
M95.80.100



Length

835 mm.
415 mm.
795 mm. Seg.
805 mm. Seg.

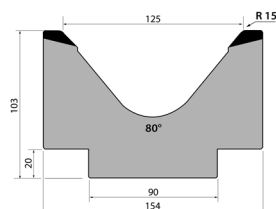
MK103.80.125



Length

835 mm.
415 mm.
795 mm. Seg.
805 mm. Seg.

M103.80.125

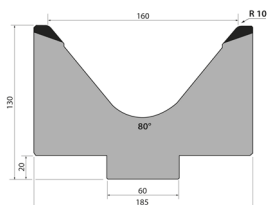


Length

835 mm.
415 mm.
795 mm. Seg.
805 mm. Seg.

Accessories for Press brakes

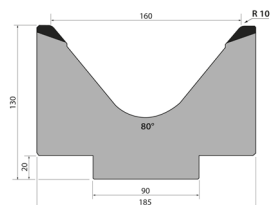
MK130.80.160



Length

- 835 mm.
- 415 mm.
- 795 mm. Seg.
- 805 mm. Seg.

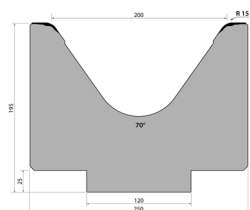
M130.80.160



Length

- 835 mm.
- 415 mm.
- 795 mm. Seg.
- 805 mm. Seg.

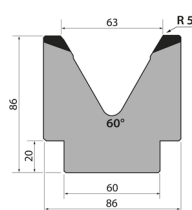
M195.70.200



Length

- 415 mm.

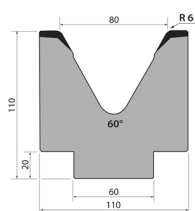
M86.60.63



Length

- 835 mm.
- 415 mm.
- 795 mm. Seg.
- 805 mm. Seg.

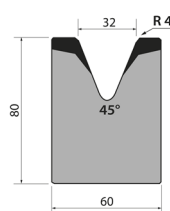
M110.60.80



Length

- 835 mm.
- 415 mm.
- 795 mm. Seg.
- 805 mm. Seg.

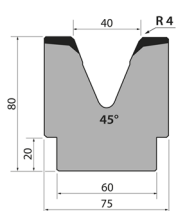
M80.45.32



Length

- 835 mm.
- 415 mm.
- 795 mm. Seg.
- 805 mm. Seg.

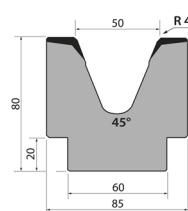
M80.45.40



Length

- 835 mm.
- 415 mm.
- 795 mm. Seg.
- 805 mm. Seg.

M80.45.50

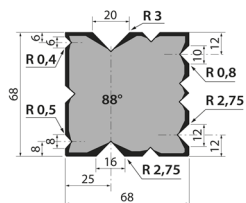


Length

- 835 mm.
- 415 mm.
- 795 mm. Seg.
- 805 mm. Seg.

Accessories for Press brakes

T70-88

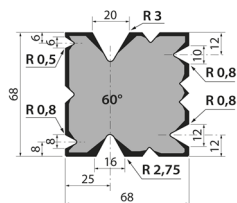


Length

525 mm.

495 mm. Seg.

T70-60

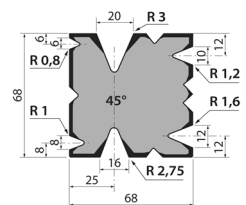


Length

525 mm.

495 mm. Seg.

T70-45

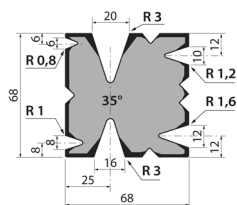


Length

525 mm.

495 mm. Seg.

T70-35

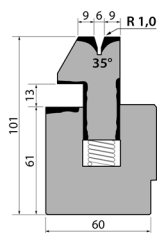


Length

525 mm.

495 mm. Seg.

S101.35.06

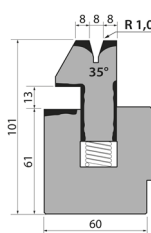


Length

835 mm.

415 mm.

S101.35.08

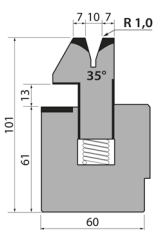


Length

835 mm.

415 mm.

S101.35.10

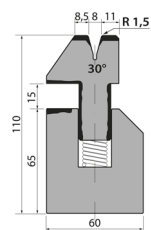


Length

835 mm.

415 mm.

S110.30.08



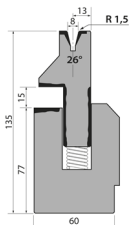
Length

835 mm.

415 mm.

Accessories for Press brakes

S135.26.08

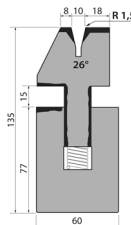


Length

835 mm.

415 mm.

S135.26.10

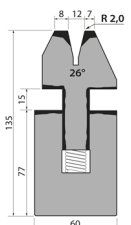


Length

835 mm.

415 mm.

SA135.26.12

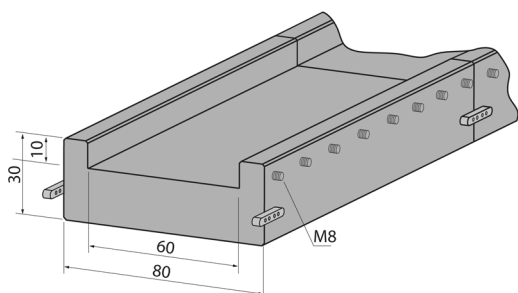


Length

835 mm.

415 mm.

Die holder C1050/R



Length

1050 mm.

Consumables

► Hydraulic Oil SIL POWER HV46



Reference: 060-BA-00016

Extreme Pressure hydraulic fluid for oleo dynamic circuits, power transmission systems that work under severe temperature and pressure conditions. Micro-filtered. It incorporates a viscosity level improver.

Container: 20L

Weight: 20 Kg.

** Recommended for Nargesa Press Brakes*

► Hydraulic Oil SIL POWER HV68



Reference: 060-BA-00017

Extreme Pressure hydraulic fluid for oleo dynamic circuits, power transmission systems that work under severe temperature and pressure conditions. Micro-filtered. It incorporates a viscosity level improver.

Container: 20L

Weight: 20 Kg.

Архангельск (8182)63-90-72
Астана (7172)727-132
Астрахань (8512)99-46-04
Барнаул (3852)73-04-60
Белгород (4722)40-23-64
Брянск (4832)59-03-52
Владивосток (423)249-28-31
Волгоград (844)278-03-48
Вологда (8172)26-41-59
Воронеж (473)204-51-73
Екатеринбург (343)384-55-89
Иваново (4932)77-34-06

Ижевск (3412)26-03-58
Иркутск (395)279-98-46
Казань (843)206-01-48
Калининград (4012)72-03-81
Калуга (4842)92-23-67
Кемерово (3842)65-04-62
Киров (8332)68-02-04
Краснодар (861)203-40-90
Красноярск (391)204-63-61
Курск (4712)77-13-04
Липецк (4742)52-20-81
Киргизия (996)312-96-26-47

Магнитогорск (3519)55-03-13
Москва (495)268-04-70
Мурманск (8152)59-64-93
Набережные Челны (8552)20-53-41
Нижний Новгород (831)429-08-12
Новокузнецк (3843)20-46-81
Новосибирск (383)227-86-73
Омск (3812)21-46-40
Орел (4862)44-53-42
Оренбург (3532)37-68-04
Пенза (8412)22-31-16
Казахстан (772)734-952-31

Пермь (342)205-81-47
Россия (495)268-04-70
Ростов-на-Дону (863)308-18-15
Рязань (4912)46-61-64
Самара (846)206-03-16
Санкт-Петербург (812)309-46-40
Саратов (845)249-38-78
Севастополь (8692)22-31-93
Симферополь (3652)67-13-56
Смоленск (4812)29-41-54
Сочи (862)225-72-31
Ставрополь (8652)20-65-13

Сургут (3462)77-98-35
Тверь (4822)63-31-35
Томск (3822)98-41-53
Тула (4872)74-02-29
Тюмень (3452)66-21-18
Ульяновск (8422)24-23-59
Уфа (347)229-48-12
Хабаровск (4212)92-98-04
Челябинск (351)202-03-61
Череповец (8202)49-02-64
Ярославль (4852)69-52-93

<https://nargesa.nt-rt.ru/> || ngr@nt-rt.ru